

NEAR EAST UNIVERSITY



**FACULTY OF ARTIFICIAL INTELLIGENCE AND
INFORMATICS**

**DEPARTMENT OF ARTIFICIAL INTELLIGENCE
ENGINEERING**

STUDENT HANDBOOK

2025-2026 Academic Year

Contents

<i>Dean's Message</i>	5
<i>About Us</i>	6
<i>Faculty Organization Chart</i>	7
Why Artificial Intelligence Engineering Department?	8
Faculty Contact Information	8
Dean	8
Dean Assistant	8
DEPARTMENT OF ARTIFICIAL INTELLIGENCE ENGINEERING	9
Head of Department's Message	9
Program Information	10
Degree Awarded	10
Admission Requirements	10
Graduation Requirements and Regulations	10
Recognition of Prior Learning	11
Program Details	11
Program Learning Outcomes	11
Program Structure	11
Artificial Intelligence Engineering Department 4-year Course Program	14
Artificial Intelligence Engineering Department Elective Courses List	15
Additional Information	16
Important Notes on Elective Courses	16
Exam Regulations, Evaluation and Grading	16
Graduation Requirements	18
<i>Academic Calendar 2025-2026</i>	19

<i>Registration and Admission Procedures</i>	27
<i>Course Registration</i>	27
Add/Drop and Withdrawal	27
Lateral and Vertical Transfers	27
Communication with Academic Staff	28
Class Attendance and Excused Absences	28
<i>International Student Office</i>	28
International Student Office Working Hours:	28
International Student Office Contact Information:	28
<i>Campus Life</i>	29
Library	29
Social Activities and Student Clubs	29
Psychological Counselling Services	29
Office of the Dean of Students	29
Student Counselling and Communication Unit	30
Sports Facilities	30
For more details:	30
Atatürk Culture and Congress Centre (AKKM)	30
Restaurants and Cafeterias	30
Market & Supermarket	31
IKAS Supermarket	31
IKAS Supermarket Express	31
NEU Event Park Drift Area	31
Accessible Cinema Hall	32
IKAS Patisserie & Bakery	32
Photocopy Services	33
Bank & ATM	33
Post Office	33
Near East Fuel Station	33
Useful Phone Numbers	34

Campus Traffic Rules and Safety	34
<i>Artificial Intelligence Engineering Department / Student Information Handbook</i>	<i>36</i>
· WHO ARE YOU? WHERE ARE YOU?	36
· ARTIFICIAL INTELLIGENCE ENGINEERING DEPARTMENT	36
✓ GRADUATION REQUIREMENTS	36
· REGISTRATION & ADMISSION PROCEDURES	36
1. 38	
2. 38	
3. 38	
4. 38	
· CONTACT	36
· MORE INFORMATION	36
· CAMPUS LIFE	36
· DO NOT FORGET!	36

Dean's Message

Dear Students;

Welcome to Near East University!

I am proud to serve as the Dean of AI and Informatics Faculty during this critical time of the rapidly developing artificial intelligence (AI) field in order to provide key opportunities for our university and our students.

The AI and informatics field create and implement designs to make human life easier. AI researchers now predict that computers will be able to perform tasks that were once considered the prerogative of human beings. They include tasks such as driving trucks, translating languages, writing high school essays, creating art, analyzing forensic evidence, and even work as a surgeon.

Near East University offers the opportunity to achieve this goal by providing high-level engineering education and the ability to adapt designs to the real world.

Departments in the Faculty of Artificial Intelligence and Informatics have certified their educational quality from accreditation organizations such as ABET, ASIIN and MÜDEK.

Our rise in world rankings is built on our reputation for delivering excellent education through faculty research, experiential learning, our growing alumni network and innovative design projects.

There are interesting developments happening every day inside and outside our innovation building on the Near East campus. The outside world will always demand more engineers, and experts in the field of AI and Informatics. We will continue to ensure that our graduates not only join this world, but also lead this field of innovative technologies.

I look forward to continuing to serve and strengthen this university while taking this journey of great success. We hope you all join us and contribute to this success.

Prof. Dr. Fadi AL-TURJMAN

Dean – Faculty of Artificial Intelligence and Informatics

About Us

The Faculty of Artificial Intelligence and Informatics at Near East University was established to meet the demands of the digital age and to provide a pioneering educational vision in next-generation technologies. Our faculty consists of nine departments: Information and Document Management, Information Systems Engineering, Cybersecurity Engineering, Software Engineering, Computer Informatics Systems, Data Analytics Engineering, Artificial Intelligence Engineering, Management Information Systems, and Computer Engineering.

With its multidisciplinary structure, the faculty integrates fundamental sciences with applied engineering and offers internationally recognized education to more than 1,500 students.

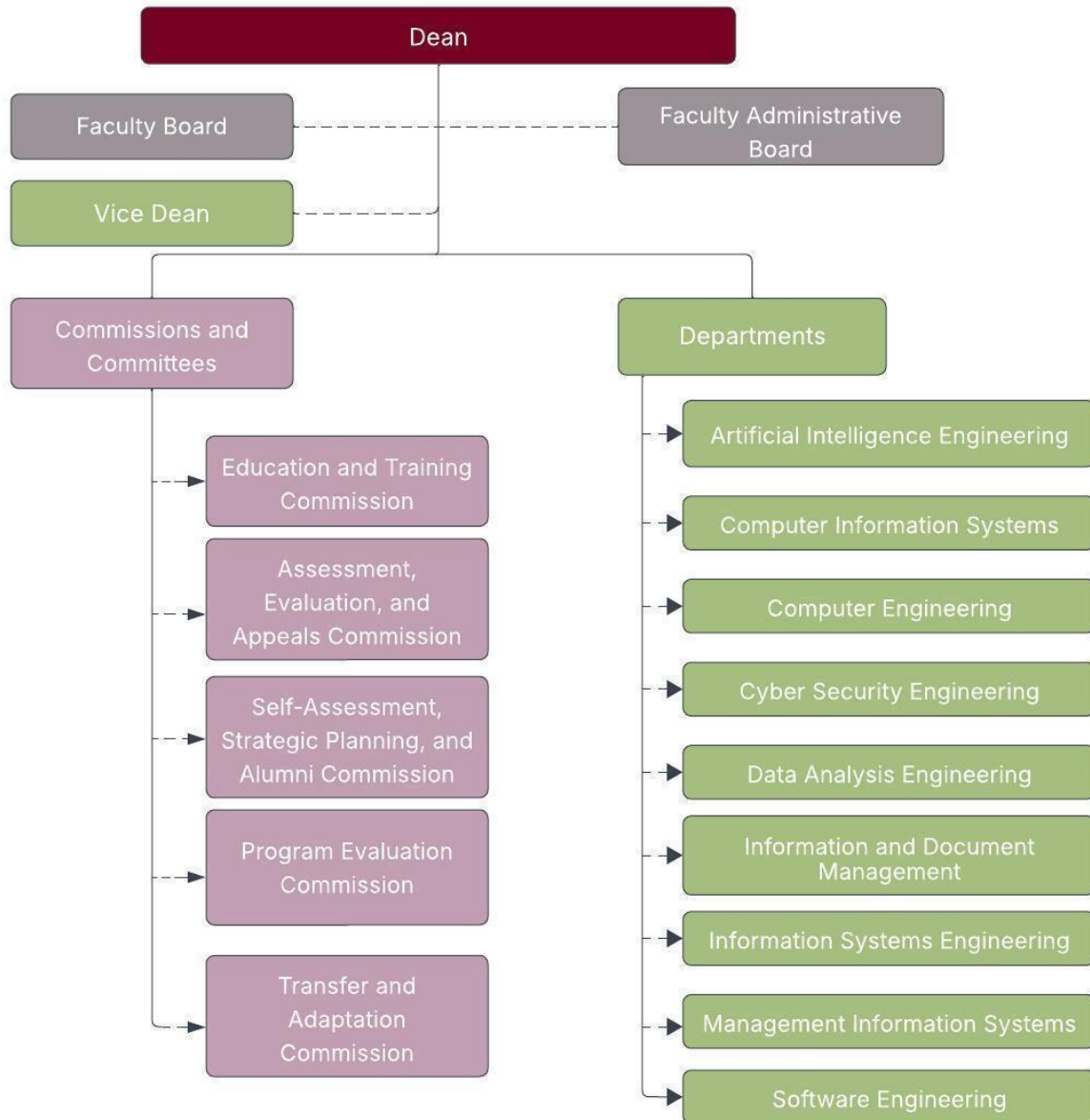
Supported by a strong academic staff and modern research infrastructure, Near East University has been a center of education, science, and culture since 1988. With world-class teaching and laboratory facilities, our university is committed to raising students who are innovative, creative, independent thinkers with a strong sense of responsibility.

With world-class laboratories and educational facilities, our university has an international identity and aims to educate students to be innovative, creative, free-thinking individuals with a strong sense of responsibility. In line with this vision:

- It maintains the title of “the best university in the KKTC” by ranking 601–800 in the Times Higher Education (THE) World University Rankings,
- It is ranked 689th in the world and 7th in Turkey on the US News & World Report “Best Global Universities 2024–2025” list,
- In the THE Impact Rankings 2025, which measure contributions to the United Nations Sustainable Development Goals, it has risen to 43rd place worldwide, and holds 13th place globally in the “Quality Education” category.

The Faculty of Artificial Intelligence and Informatics aims to educate competent, research-oriented graduates with global competitiveness, offering interdisciplinary programs that cover software engineering, cybersecurity, artificial intelligence, data analytics, and many other cutting-edge fields, while continuously strengthening its research capabilities and academic excellence.

Faculty Organization Chart



Why Artificial Intelligence Engineering Department?

The Department of Artificial Intelligence Engineering at Near East University not only equips students with strong technical knowledge but also provides the vision to shape the technologies of the future. The program prepares students for the multidimensional world of artificial intelligence through a comprehensive curriculum that covers areas such as machine learning, deep learning, natural language processing, robotics, and big data analytics.

One of the most distinctive features of the program is its interdisciplinary approach. Students gain knowledge from diverse fields such as engineering, healthcare, economics, and social sciences, enabling them to apply AI technologies across various sectors. Furthermore, through projects, internships, and industry collaborations, students acquire both academic and professional competence.

The primary language of instruction is English, which grants students direct access to international academic resources and provides a competitive advantage in the global job market. Courses are supported by Ai. Prof. DUX, an AI-based academic assistant, offering students an innovative learning experience aligned with the needs of the digital era.

Graduates have a wide range of career opportunities in software development, data science, autonomous systems, healthcare technologies, financial technologies, cybersecurity, and research centers. What truly sets the Department of Artificial Intelligence Engineering at Near East University apart is its commitment to addressing technology not only from an engineering perspective but also from the dimensions of ethics, security, sustainability, and social responsibility. In this way, students are educated not only as successful engineers but also as conscious, responsible, and globally impactful professionals.

Faculty Contact Information

Dean

Prof. Dr. Fadi AL-TURJMAN

Near East University Faculty of Artificial Intelligence and Informatics

Yakın Doğu Boulevard, Postal Code: 99138 Nicosia / TRNC Mersin 10 - TURKEY

Tel: +90 (392) 223 64 64

Email: fadi.alturjman@neu.edu.tr

Dean's Assistant

Sinem Alturjman

E-posta: yapayzekavebilisim.dekanlik@neu.edu.tr

ARTIFICIAL INTELLIGENCE ENGINEERING DEPARTMENT

Head of Department's Message

Dear Students,

Welcome to our Department of Artificial Intelligence Engineering! At a time when humanity is experiencing one of the most exciting technological transformations in history, it is a great honor and pleasure to have you among us. Artificial intelligence stands at the center of a revolution that is reshaping not only technology but also every aspect of life — from healthcare to finance, from industry to art. You will not merely be followers of this revolution, but pioneers who will help build the future.

Our department aims not only to teach you today's technologies but also to equip you with the knowledge and skills to design and develop the technologies of tomorrow. To achieve this, we have adopted an educational approach that combines strong theoretical foundations with practical expertise, focusing on core areas such as machine learning, deep learning, data science, natural language processing, and robotics. Our curriculum is enriched with project-based learning methods and hands-on training opportunities in collaboration with industry, preparing you to generate innovative solutions to complex engineering challenges.

During your studies here, under the guidance of our dynamic and expert academic staff, you will not only gain knowledge but also contribute to groundbreaking research that pushes the boundaries of artificial intelligence. Our goal is to nurture engineers who can think analytically, solve problems effectively, work collaboratively, and, above all, remain committed to ethical values and social responsibility. Ensuring that the technologies you develop serve humanity and our nation is our foremost priority.

University life is not only about academic achievement but also a unique journey that shapes your personal development. On this journey, we invite you to be part of an ecosystem that encourages not only learning but also creating, exploring, and pushing boundaries. I am confident that you will make the most of our laboratories, the experience of our academic staff, and all the opportunities our university offers.

I wish you great success on this exciting path as we build the future together.

Warm regards,

Prof. Dr. Gülsüm Aşıksoy
Head of the Department

Artificial Intelligence Engineering Department
Near East University

Contact:

Phone: +90 (392) 223 64 64

E-mail: gulsum.asiksoy@neu.edu.tr

Program Information

The Department of Artificial Intelligence Engineering was established in 2019 to meet the rapidly growing global demand for highly qualified engineers in this transformative field. The vision of our young and dynamic department is to become a leading and respected center of education and scientific research in artificial intelligence, both nationally and internationally. Our mission is to educate engineers who not only follow this technological revolution but actively shape and lead it.

The strength of our department lies in its modern and comprehensive curriculum, state-of-the-art facilities, and distinguished academic staff. Our curriculum is carefully designed to integrate deep theoretical knowledge with strong practical skills, covering core areas such as machine learning, deep learning, data science, natural language processing, computer vision, and robotics. Students have access to fully equipped software and hardware laboratories, research centers, and collaborative project spaces, providing an ideal environment to transform innovative ideas into real-world applications. Our faculty consists of internationally recognized researchers and educators dedicated to mentoring the next generation of AI pioneers and harnessing the power of science for the benefit of humanity.

The foundation of our program is based on an interdisciplinary synthesis of systems engineering, software engineering, computer science, and human-centered design principles. The language of instruction is English, preparing our graduates to compete and collaborate effectively on an international scale. The undergraduate program spans four years (eight semesters). Students who successfully complete this program are awarded a Bachelor of Science (B.S.) in Artificial Intelligence Engineering and earn the professional title of Artificial Intelligence Engineer.

Degree Awarded

Students who successfully complete the program will receive a Bachelor of Artificial Intelligence Engineer.

Admission Requirements

For international students;

- High school diploma (Admission of international students is based on their high school credentials.)

- Proof of English language proficiency

For Turkish Cypriot students;

- Admission of Turkish Cypriots is based on the Near East University Entrance and Placement exam.
- Proof of English Language proficiency is required.

Graduation Requirements and Rules

To graduate, students in this undergraduate program must have a Weighted Grade Point Average (GPA) of at least 2.00/4.00 and have completed all program courses with a minimum letter grade of DD/S. The minimum ECTS credit required for graduation is 240.

Recognition of Prior Learning

At Near East University, full-time students may be exempted from certain courses in accordance with the relevant regulations. If a course previously completed at another higher education institution is deemed equivalent in content to a course offered at NEU, the student may be granted exemption upon evaluation of the course content and approval by the relevant faculty or institute.

Program Details

The Bachelor of Science in Artificial Intelligence Engineering provides students with a solid theoretical foundation and a broad range of practical applications over a four-year program. Built on the fundamentals of mathematics, computer science, and engineering, the program focuses particularly on areas such as machine learning, deep learning, natural language processing, robotics, and data science. Students not only learn algorithms and technical solutions but also gain the ability to analyze the ethical, legal, social, and economic implications of AI applications.

The program offers a strong foundation for further graduate studies, including master's and doctoral programs. Teaching methods include lectures, laboratory practices, project-based learning, group work, and individual research. Core courses focus on the fundamental components of artificial intelligence and engineering principles, while elective courses allow students to develop expertise in interdisciplinary areas such as bioinformatics, financial technologies, autonomous systems, cybersecurity, and health technologies.

The combination of core and elective courses equips students with both technical knowledge and an interdisciplinary perspective, enabling them to understand the role of artificial intelligence in engineering, science, and society from a comprehensive viewpoint.

Program Learning Outcomes

- Explain the fundamental concepts, methods, and theoretical foundations of AI systems.
- Design, implement, and evaluate machine learning and deep learning algorithms.
- Process large datasets to develop AI-based solutions.
- Assess the ethical, legal, and societal dimensions of AI applications.
- Connect theoretical knowledge with engineering practices and develop solutions for real-world problems.
- Identify and analyze the interactions between AI and related fields, including engineering, healthcare, economics, and social sciences.
- Define complex engineering problems and solve them using innovative AI methods.
- Conduct academic research and contribute scientifically to the field of artificial intelligence.
- Communicate technical knowledge clearly and effectively through both oral and written skills.
- Actively participate in national and international AI discussions and projects, continuously advancing professional development.

Program Structure

The Bachelor's program in Artificial Intelligence Engineering at Near East University spans a four-year (eight-semester) curriculum. During this period, students are required to successfully complete a total of 51 courses, corresponding to 240 ECTS credits. In addition to core courses in the field, the curriculum includes courses mandated by the Higher Education Planning, Evaluation, Accreditation, and Coordination Council (YÖDAK) as well as common courses determined by the University Senate.

The full four-year course schedule and the list of elective courses are provided below.

Artificial Intelligence Engineering Department 4-year Course Program

FACULTY OF ARTIFICIAL INTELLIGENCE AND INFORMATICS								YAPAY ZEKA VE BİLİŞİM FAKÜLTESİ							
ARTIFICIAL INTELLIGENCE ENGINEERING								YAPAY ZEKA MÜHENDİSLİĞİ							
CODE	COURSE NAME	DERS ADI	C/E	T	P	C	E	CODE	COURSE NAME	DERS ADI	C/E	T	P	C	E
MTH113	LINEAR ALGEBRA	DOĞRUSAL CEBİR	C	3	0	3	5	AI1104	DISCRETE STRUCTURES	DİSKRİT YAPILAR	C	3	0	3	5
AI102	PROGRAMMING AND PROBLEM SOLVING	PROGRAMLAMA VE PROBLEM ÇÖZME	C	3	2	4	5	ENG102	ENGLISH II	İNGİLİZCE II	C	3	0	2	3
ENG101	ENGLISH I	İNGİLİZCE I	C	3	0	2	3	MTH102	CALCULUS II	MATEMATİK II	C	4	0	4	6
MTH101	CALCULUS I	MATEMATİK I	C	4	0	4	5	PHY102	GENERAL PHYSICS II	GENEL FİZİK II	C	3	2	4	6
PHY101	GENERAL PHYSICS I	GENEL FİZİK I	C	3	2	4	5	AI1108	OBJECT ORIENTED PROGRAMMING	NESNE YÖNÜMLÜ PROGRAMLAMA	C	2	2	3	6
CAM100	CAMPUS ORIENTATION	KAMPÜSE UYUM	C	2	0	0	2	CAR100	CAREER PLANNING	KARIYER PLANLAMA	C	2	0	0	2
CHM101	GENERAL CHEMISTRY I	GENEL KİMYA I	C	3	2	4	5	GEC351	21ST CENTURY SKILLS	21. YY BECERİLERİ	E	2	0	0	2
Total				21	6	21	30	Total				19	4	16	30
3 rd Semester								4 th Semester							
CODE	COURSE NAME	DERS ADI	C/E	T	P	C	E	CODE	COURSE NAME	DERS ADI	C/E	T	P	C	E
AI1001	LOGIC DESIGN	SAYISAL MANTIK	C	3	2	4	6	AI1202	DATABASE MANAGEMENT SYSTEMS	VERİ TABANI YÖNETİM SİSTEMLERİ	C	4	0	4	5
AI1201	DATA STRUCTURES & ALGORITHMS	VERİ YAPILARI VE ALGORİTMALAR	C	3	2	4	6	AI206	REASONING AND AGENTS IN AI	YAPAY ZEKADA AKIL YÜRÜTME VE A	C	4	0	4	7
AI201	AI PRINCIPLES AND TECHNIQUES	YAPAY ZEKA İLKE VE TEKNİKLERİ	C	3	0	3	3	MTH251	PROBABILITY AND STATISTICS	OLASILIK VE İSTATİSTİK	C	3	0	3	6
MTH201	DIFFERENTIAL EQUATIONS	DİFERANSİYEL DENKLEMLER	C	4	0	4	6	AIT104	ATATÜRK PRINCIPLES AND REFORMS II	ATATÜRK İLKELERİ VE İNKILAP TARİH	C	2	0	2	2
AI1007	MULTIMEDIA SYSTEMS	MULTİMEDYA SİSTEMLERİ	C	3	0	3	5	AI299	SUMMER TRAINING I	STAJ I	C	0	0	0	6
AIT103	ATATÜRK PRINCIPLES AND REFORMS I	ATATÜRK İLKELERİ VE İNKILAP TARİHİ I	C	2	0	2	2	CHC100	CYPRUS HISTORY AND CULTURE	KIBRIS KÜLTÜRÜ VE TARİHİ	E	2	0	0	2
YIT101	TURKISH FOR FOREIGNERS I	YABANCILAR İÇİN TÜRKÇE I	C	2	0	2	2	YIT102	TURKISH FOR FOREIGNERS II	YABANCILAR İÇİN TÜRKÇE II	C	2	0	2	2
Total				20	4	22	30	Total				17	0	15	30
5 th Semester								6 th Semester							
CODE	COURSE NAME	DERS ADI	C/E	T	P	C	E	CODE	COURSE NAME	DERS ADI	C/E	T	P	C	E
AI1302	OPERATING SYSTEMS	İŞLETİM SİSTEMLERİ	C	3	0	3	6	AI302	INTRODUCTION TO MACHINE LEARNING	MAKİNE ÖĞRENİMİNE GİRİŞ	E	3	2	4	7
AI301	PATTERN RECOGNITION	DESEN TANIMA	E	2	2	3	5	AI1303	DATA COMMUNICATIONS AND NETWORKING	VERİ İLETİŞİMİ VE AĞLAR	C	3	2	4	5
ENG201	ORAL COMMUNICATION SKILLS	SÖZLÜ İLETİŞİM BECERİLERİ	C	3	0	3	4	AI304	LEARNING IN HUMANS	İNSANLARDA ÖĞRENME	E	3	0	3	5
AI303	NATURAL LANGUAGE PROCESSING	DOĞAL DİL İŞLEME	E	3	2	3	3	AI306	DEEP LEARNING	DERİN ÖĞRENME	E	2	2	3	5
AI1439	OCCUPATIONAL HEALTH AND SAFETY I	İŞ SAĞLIĞI VE GÜVENLİĞİ I	C	2	0	2	4	AI1440	OCCUPATIONAL HEALTH AND SAFETY II	İŞ SAĞLIĞI VE GÜVENLİĞİ II	C	2	0	3	2
AI1427	MANAGEMENT FOR ENGINEERS	MÜHENDİSLER İÇİN YÖNETİM	C	3	0	3	5	AI399	SUMMER TRAINING II	STAJ II	C	0	0	0	6
AI204	NEURAL COMPUTATION	SİNİRSEL HESAPLAMALAR	C	2	2	3	3	Total				13	6	17	30
Total				18	6	20	30	8 th Semester							
CODE	COURSE NAME	DERS ADI	C/E	T	P	C	E	CODE	COURSE NAME	DERS ADI	C/E	T	P	C	E
AI401	INTRODUCTION TO ROBOTICS	ROBOTİĞE GİRİŞ	E	2	2	3	7	AI1429	ENGINEERING ETHICS	MÜHENDİSLİK ETİĞİ	C	3	0	3	6
AI403	COMPUTER VISION	BİLGİSAYAR GÖRÜŞÜ	E	2	2	3	7	AI492	SENIOR PROJECT II	BİTİRME PROJESİ II	C	4	0	4	7
AI491	SENIOR PROJECT I	BİTİRME PROJESİ I	C	3	0	3	6	AI402	SPEECH PROCESSING	KONUŞMA İŞLEME	E	2	2	3	7
TE	TECHNICAL ELECTIVE	TEKNİK SEÇMELİ	E	2	2	3	5	TE	TECHNICAL ELECTIVE	TEKNİK SEÇMELİ	E	2	2	3	5
TE	TECHNICAL ELECTIVE	TEKNİK SEÇMELİ	E	2	2	3	5	TE	TECHNICAL ELECTIVE	TEKNİK SEÇMELİ	E	2	2	3	5
Total				11	8	15	30	Total				7	0	16	30

Artificial Intelligence Engineering Department Elective Courses List

Course Code	Course Name in Turkish	Course Name in English	T	P	C	E
AII415	Karar Verme	Decision Making	2	2	3	5
AII419	Görüntü İşleme	Image Processing	2	2	3	5
AIE411	Gelişmiş Veri Analizi	Advanced Data Analysis	2	2	3	5
AIE412	Bilgi Alma ve Web Araması	Information Retrieval and Web Search	2	2	3	5
AIE413	İnsan-Robot Etkileşimi	Human-Robot Interaction	2	2	3	5
AIE414	Derin Güçlendirme Öğrenmesi ve Kontrolü	Deep Reinforcement Learning and Control	2	2	3	5
AIE415	Mobil Robot Programlama	Mobile Robot Programming	2	2	3	5
AIE416	Otonom Araçlar	Autonomous Agents	2	2	3	5
AIE417	Kuantum Bilgisayara Giriş	Introduction to Quantum Computing	2	2	3	5
AIE418	Bilgisayar Animasyonu ve Görselleştirme	Computer Animation & Visualization	2	2	3	5
AIE419	Algoritmik Oyun Teorisi ve Uygulamaları	Algorithmic Game Theory and its Applications	2	2	3	5
AIE420	Bulanık Sistemler	Fuzzy Systems	2	2	3	5
AIE458	Yapay Zeka ve Nesnelerin İnterneti	Artificial Intelligence and Internet of Things	2	2	3	5
AIE457	Yapay Zeka ve Bulut Bilişim	AI and Cloud Computing	2	2	3	5

Additional Information

To graduate, students must successfully complete courses totalling 240 ECTS credits. Business/Business Administration students are required to fulfil both compulsory and technical elective course requirements to meet the 240 ECTS graduation threshold. Otherwise, they will not be considered eligible for graduation.

A minimum attendance rate of 70% is mandatory in all courses across our programs. Students who fail to meet this requirement receive an NA (Never Attended) grade for the relevant course. This grade is given to those who do not satisfy the attendance condition and lose the right to participate in end-of-term evaluations. The NA grade is not included in the GPA calculation.

In future semesters, students must still fulfil the 70% attendance requirement for the same course. However, in the case of a course repeated due to an FF (Failing Grade), the 70% attendance requirement is not enforced.

Important Notes on Elective Courses

Students in the AI Engineering program must take 5 elective courses to graduate. These courses must be chosen from the program's elective course list. Courses not listed cannot be considered electives. The ECTS credits of elective courses must be equal to or greater than the credits specified in the curriculum.

Exam Regulations, Evaluation and Grading

At our university, student performance is generally assessed through in-person examinations, including a midterm exam and a final exam. However, in some courses, alternative assessment methods—such as project assignments, presentations, homework, quizzes, and group work—are also employed to encourage active participation and evaluate a range of skills.

The method of assessment for each course may vary depending on the nature of the course and the instructor's approach. Assessment criteria are communicated to students at the beginning of the semester and are clearly outlined in the course syllabus.

The final course grade is calculated based on the weighted average of all evaluations conducted throughout the term, including exams, assignments, and any additional components. Therefore, students are expected to actively engage not only in exams but in all forms of assessment during the semester. At Near East University, students receive one of the letter grades described below for each course, based on the assessment conducted by the course instructor. Each letter grade corresponds to a specific ECTS credit weight.

NOT	HARF NOTU	KATSAYI	AKTS NOTU
90-100	AA	4.0	A
85-89	BA	3.5	B*
80-84	BB	3.0	B*
75-79	CB	2.5	C*
70-74	CC	2.0	C*
60-69	DC	1.5	D
50-59	DD	1.0	E

49-00	FF	0.0	F
-------	----	-----	---

To be considered successful in a course: Students in **Level 5 (Associate)** and **Level 6 (Bachelor's)** programs must receive at least a **DD.**, Students in **Level 7 (Master's)** programs must obtain at least a **CC.**, Students in **Level 8 (Doctoral)** programs must earn at least a **BB.** For non-credit courses not included in GPA calculations, students must receive an **S (Satisfactory)** grade.

In addition to local letter grades, each grade has an **ECTS equivalent**, which facilitates student mobility between institutions. The grading table above is used for all courses offered by Near East University.

Besides standard letter grades, the following special grades may also appear on student transcripts:

Grade Meaning

I	Incomplete
S	Satisfactory
U	Unsatisfactory
P	Successful Progress
NP	Not Successful Progress
EX	Exempt
NI	Not Included
W	Withdrawal
NA	Never Attended

I (Incomplete): Assigned to students who fail to complete course requirements due to a valid reason approved by the instructor. Students must fulfil all outstanding obligations within one week after the official grade submission deadline. In exceptional cases, the deadline may be extended up to two weeks before the start of the next semester by the relevant academic board. Failure to meet the requirements within the given timeframe results in an automatic **FF** or **U** grade.

S (Satisfactory): Given to students who successfully complete non-credit courses.

U (Unsatisfactory): Given to students who fail non-credit courses.

P (Successful Progress): Assigned to students in courses with multi-semester requirements, where GPA is not calculated, and progress during the term is deemed satisfactory.

NP (Not Successful Progress): Assigned when expected progress is not achieved in multi-term courses that do not count toward GPA.

EX (Exempt): Given to students exempt from a specific course in the curriculum.

NI (Not Included): Indicates a course that is listed on the transcript but not included in the GPA calculation or official program requirements.

W (Withdrawal): Assigned when a student withdraws from a course between the 3rd and 10th week of the semester with approval from both their academic advisor and course instructor. Withdrawals are not allowed during the first two semesters. A student may withdraw from a maximum of **two courses** in associate programs and **four courses** in bachelor's programs. Courses with a prior **W** grade that did not affect the GPA cannot be withdrawn from again. The student must retake the course in the first term it is offered again.

NA (Never Attended): Given to students who fail to meet the minimum attendance requirement and lose the right to participate in final assessments. This grade is not included in the GPA.

On all student transcripts, both national letter grades and their corresponding ECTS equivalents are shown.

Graduation Requirements

To graduate from this undergraduate program, students must meet the following requirements;

Successfully complete all courses in the curriculum with at least 240 ECTS credits and a minimum grade of DD/S and have a Cumulative Grade Point Average (CGPA) of at least 2.00 out of 4.00.

Academic Calendar 2025-2026

	FALL TERM
July 01, 2025; Tuesday	Intern Rotations Commence for Year 6: Faculty of Medicine
September 08, 2025; Monday	Last Day for the 1st Payment of the Fees (Full Payments and 1st Instalment)
September 08, 2025; Monday	Classes Commence for Years 2, 3, 4 and 5: Faculty of Medicine
September 08-12, 2025; Monday-Friday	Courses to be assigned to the Academic Staff
September 11-15, 2025; Thursday Monday	Activation of the Courses
September 08, 2025; Monday	Classes Commence for Years 1 and 2: Faculty of Medicine
September 15, 2025; Monday	English, Arabic and Turkish Proficiency Exams for Undergraduate Students
September 15-19, 2025; Monday-Friday	Course Registration
September 18, 2025; Thursday	English Language Proficiency Exam for Postgraduate Students
September 19, 2025; Friday	Last Day for Postgraduate thesis juries

	FALL TERM
September 22, 2025; Monday	Classes Commence (including the Preparatory Schools)
September 30, 2025; Tuesday	Exemption Exam for Common Courses (Courses in English)
October 02, 2025; Thursday	Exemption Exam for Common Courses (Courses in Turkish)
October 08, 2025; Wednesday	Last Day for the Payment of the 2nd Instalment of the Fees (for 8 Instalments)
October 08, 2025; Wednesday	Last Day for Changing the “I” (Incomplete) Grades for the Previous Term
October 10, 2025; Friday	Last Day for International Students to Withdraw
October 10, 2025; Friday	Last Day for Add/Drop
October 24, 2025; Friday	Last Day for Late Registration
October 29, 2025; Wednesday	Public Holiday
November 07, 2025; Friday	Last Day for Add/Drop for New International Students
November 08, 2025; Saturday	Last Day for the Payment of the 3rd Instalment of the Fees (for 8 Instalments)
November 08-14, 2025; Saturday Friday	Mid-term Exams

	FALL TERM
November 15, 2025; Saturday	Public Holiday
November 17-21, 2025; Monday- Friday	English Preparatory School Module 1 Final Exams
December 08, 2025; Monday	Last Day for the Payment of the 4th Instalment of the Fees (for 8 Instalments)
December 08, 2025; Monday	Identification of Courses for the Following Academic Term and Commencement of the Work on the Timetable
December 19, 2025; Friday	Last Day for Withdrawal
December 23, 2025; Tuesday	Last Day for Entry of NA Grades into the System
December 25, 2025; Thursday	Administrative Holiday for Students
December 30, 2025; Tuesday	Last Day of Classes
January 01, 2026; Thursday	Public Holiday
January 02, 2026; Friday	Administrative Holiday for Students
January 05-14, 2026; Monday Wednesday	Final Exams
January 08, 2026; Thursday	Last Day for the Payment of the 2nd Instalment of the Fees (for 2 Instalments)

	FALL TERM
January 08, 2026; Thursday	Last Day for the Payment of the 5th Instalment of the Fees (for 8 Instalments)
January 12-18, 2026; Monday-Sunday	Semester break for Year 4: Faculty of Medicine
January 17, 2026; Saturday	Last Day for the Grade Submission
January 19-23, 2026; Monday-Friday	English Preparatory School Module 2 Final Exams
January 20-21, 2026; Tuesday Wednesday	Graduation Ceremonies
January 26-08 February 2026; Monday-Sunday	Semester break for Years 1, 2 and 3: Faculty of Medicine
February 02-08, 2026; Monday-Sunday	Semester break for Year 5: Faculty of Medicine
	SPRING TERM
January 29-30, 2026; Thursday-Friday	Courses to be assigned to the Academic Staff
February 02-03, 2026; Monday-Tuesday	Activation of the Courses
February 02-06, 2026; Monday-Friday	Diploma Distribution
February 04-06, 2026; Wednesday-Friday	Course Registration

	FALL TERM
February 05, 2026; Thursday	First English Language Proficiency Exam of the Semester for Postgraduate Students
February 06, 2026; Friday	Last Day for Postgraduate thesis juries
February 06, 2026; Friday	English, Arabic and Turkish Proficiency Exams for Undergraduate Students
February 08, 2026; Sunday	Last Day for the Payment of the 6th Instalment of the Fees (for 8 Instalments)
February 09, 2026; Monday	Classes Commence (including the Preparatory Schools)
February 16, 2026; Monday	Exemption Exams for Common Courses (Courses in English)
February 17, 2026; Tuesday	Exemption Exams for Common Courses (Courses in Turkish)
February 26, 2026; Thursday	Last Day for Changing the “I” (Incomplete) Grades for the Previous Term
February 27, 2026; Friday	Last Day for International Students to Withdraw
February 27, 2026; Friday	Last Day for Add/Drop
March 06, 2026; Friday	Last Day for Late Registration
March 08, 2026; Sunday	Last Day for the Payment of the 7th Instalment of the Fees (for 8 Instalments)
March 19-22, 2026; Thursday- Sunday	Public Holiday

	FALL TERM
March 30, 2026; Monday	Last Day for Add/Drop for New International Students
April 06-April 11, 2026; Monday-Saturday	Mid-term Exams
April 06-April 10, 2026; Monday-Friday	English Preparatory School Module 3 Final Exams
April 08, 2026; Wednesday	Last Day for the Payment of the 8th Instalment of the Fees (for 8 Instalments)
April 23, 2026; Thursday	Public Holiday
May 01, 2026; Friday	Public Holiday
May 08, 2026; Friday	Last Day for Withdrawal
May 08, 2026; Friday	Identification of Courses for the Following Academic Term and Commencement of Work on the Timetable
May 19, 2026; Tuesday	Public Holiday
May 18, 2026; Monday	Last Day for Entry of NA Grades into the System
May 22, 2026; Friday	Last Day of Classes
May 22, 2026; Friday	Last day of Classes for the Faculty of Medicine; Years 1, 2 and 3
May 27-31, 2026; Wednesday-Sunday	Public Holiday

	FALL TERM
June 01- 10, 2026; Monday-Wednesday	Final Exams
June 05, 2026; Friday	Last day of Classes for the Faculty of Medicine: Years 4 and 5
June 11, 2026; Thursday	Final Exam for the Faculty of Medicine: Year 2
June 12, 2026; Friday	Final Exam for the Faculty of Medicine: Year 1
June 12, 2026; Friday	Final Exam for the Faculty of Medicine: Year 3
June 12, 2026; Friday	Last Day for the Grade Submission
June 12, 2026; Friday	Deadline for Summer School Applications
June 15, 2026; Monday	Applications for Re-sit Exams (Annual Programmes)
June 15-19, 2026; Monday-Friday	English Preparatory School Module 4 Final Exams
June 16-19, 2026; Tuesday-Friday	Re-sit Exams (Annual Programmes)
June 22, 2026; Monday	End of the Term (Last Day for the Submission of the Results of the Re-sit Exams)
June 22-26, 2026; Monday-Friday	Graduation Ceremonies

	SUMMER TERM
June 22-24, 2026; Monday-Wednesday	Courses to be assigned to the Academic Staff
June 22-24, 2026; Monday-Wednesday	Activation of the Courses
June 24, 2026; Wednesday	English Language Proficiency Exam for Postgraduate Students
June 24-26, 2026; Wednesday-Friday	Course Registration
June 26, 2026; Friday	Last Day for Postgraduate thesis juries
June 26, 2026; Friday	English Language Proficiency Exam for Undergraduate Students
June 29, 2026; Monday	Last day of Classes for the Faculty of Medicine: Year 6
June 29, 2026; Monday	Classes Commence (including the Preparatory Schools)
July 20, 2026; Monday	Public Holiday
August 01, 2026; Saturday	Public Holiday
August 07, 2026; Friday	Last Day of Classes (including the Preparatory Schools)
August 10-15, 2026; Monday-Saturday	Final Exams (including the Preparatory Schools)
August 17, 2026; Monday	Last Day for the Grade Submission

	SUMMER TERM
August 18, 2026; Tuesday	End of Term
August 24-28, 2026; Monday-Friday	Diploma Distribution

Registration and Admission Procedures

International Student Affairs is in the Faculty of Communication building and is open from Monday to Friday, between 08:00 and 17:00. Students can obtain information about faculties,

complete registration procedures, and request documents such as exam entrance certificates, student certificates, and transcripts from the International Student Affairs Office.

Course Registration

Course registration is conducted online each semester. After completing the semester tuition payment, students can register for their courses via the online system at <http://ogrsis.neu.edu.tr>.

To access this system, each student is provided with a student ID number and a personal password by the faculty secretary. After selecting their courses through the system, students must also obtain approval from their academic advisors via the same platform.

The registration process is also outlined on the university's official website. However, students who have not paid their tuition fees or submitted their payment receipts to the Student Affairs Office will not be able to proceed with online registration. Final approval of course registration is completed by the academic advisors of the department.

Additionally, students may complete course registration by meeting in person with their academic advisors within their departments. During the registration period, as indicated in the academic calendar, students are expected to consult with their advisors for course selection and academic guidance.

Add/Drop and Withdrawal

Each semester, specific Add/Drop and Course Withdrawal dates are determined and announced in the academic calendar. During this period, students can attend their registered courses and, if they wish, make changes by adding or dropping courses. All course withdrawal, course change, or course addition procedures must be completed within the dates specified in the academic calendar. Students must consult with their academic advisors to carry out the requested changes.

Lateral and Vertical Transfers

Students who wish to apply for a lateral or vertical transfer must apply to the Student Affairs Office. After the application is approved, the student must provide an official transcript from their previous university to the department they have been admitted to. Before the student begins their education, the Department Head/Dean and the assigned academic advisor will evaluate whether the courses previously taken are equivalent to the courses in the current program.

For students who are citizens of the Republic of Türkiye, the rules regarding transfers to Near East University can be reviewed at the following links in accordance with the Council of Higher Education (YÖK) and university regulations:

<http://www.yok.gov.tr/4767>

<https://neu.edu.tr/wp-content/uploads/2023/05/29/YDU-Yatay-Gecis-Yonetmeligi-29.05.2023.pdf>

Communication with Academic Staff

Subject	Description
Course Materials and Content	All course materials, weekly content, and announcements are shared via the UZE BIM platform: https://uzebim.neu.edu.tr/
Email Communication	You can contact academic staff through their institutional email addresses .
Face-to-Face Meetings	You can meet with academic staff during their office hours , which are posted on their office doors in the faculty building.
Academic Staff Information	CVs and contact information of academic staff are available at: https://aif.neu.edu.tr/people/

Student participation in class and excuses

Students are required to attend at least 70% of the class hours for each course. Medical reports from the Near East Hospital or a state hospital are valid as excuses for absences. If a student misses an exam, they must submit the report within three business days of the exam date; otherwise, they will lose their right to take the make-up exam. Students should monitor the make-up exam schedule on the university's announcements page or the instructor's personal page. If a student misses the previously announced make-up exam date, they will lose their right to take the exam.

Student Affairs

The Student Affairs Registration and Admissions and Student Accounting Units are responsible for maintaining student records from initial registration to graduation, informing students about payment procedures, guiding students within the framework of relevant regulations, and managing student documentation processes.

The Student Affairs Registration and Admissions Unit handles registration and admission procedures (pre-registration, final registration, course registration, etc.), student documentation procedures (student certificate, transcript, etc.), transfer procedures, immigration procedures, military service deferment, registration cancellation/dismissal, academic leave procedures, student ID card applications, student petition acceptance, YÖKSİS (e-Government) procedures for Turkish nationals, TRNC-YÖKAS (higher education registration system), student information system updates, official student affairs correspondence, student announcements, and graduation procedures (Graduation Certificate/Diploma/Graduate Transcript, etc.).

Our Student Affairs Accounting Unit handles: Student fee investment transactions (tuition fees, social activity, internship, stamp, transcript fees, etc.), payment method options (cash or installment), determination of student status (active, passive student, etc.), semester registration transactions, master's and doctoral course approval, visa/final/make-up exam entrance document approval, and evaluation of accounting petitions are carried out.

International Student Office Working Hours:

Monday to Friday 08:00 – 17:00.
Closed on official holidays.

For Turkish Students

Student Affairs Chief: Emine Kılıçoğulları

Phone: 0392 223 6464 / Extension 5217 and 5377

E-mail: eminebasarhan.kilicogullari@neu.edu.tr For International Students

Office Manager: Beliz Özdiren

E-mail: beliz.ozdiren@neu.edu.tr

Campus Life

Library

Located directly across from the Faculty of Economics and Administrative Sciences building, the Grand Library features over 1,000,000 open-shelf books, 150 million electronic journals, 7,000 DVDs, 17 film viewing booths, 12 individual and group study rooms, 4 lecture halls with 1,000 seats, a theatre hall with a capacity of 350, a cafeteria for 600, and 600 study desks. This makes it a world-class cultural and information-access centre. The library is open 24/7 and is free of charge. The information centre, equipped with the latest digital technologies, is accessible from anywhere via the internet. Students can also access information throughout the campus via wireless internet.

Social Activities and Student Clubs

Students can participate in various activities throughout their studies, including university-sponsored conferences and club activities that encourage social engagement. Some active clubs include the Law Club, Nature and Sports Club, Scientific Research and Health Club, Theatre Club, Photography Club, and Tango Club. For more information, visit:

<https://neu.edu.tr/kampusteyasam/sosyal-ve-kulturel-kulupler/>

The campus also features the country's first and only Olympic Indoor Swimming Pool, covering 2,700 m², with a height of 16 meters, dimensions of 50 x 21 meters, 3,100 tons of water capacity, central heating, 1,000 spectator seats, and diving towers at 3, 5, 7, and 10 meters. Swimming courses are offered in both summer and winter.

<https://neu.edu.tr/kampusteyasam/olimpik-kapali-yuzme-havuzu/>

Psychological Counselling Services

Since 1995, the university has offered free psychological counselling. The Counselling Centre is located on the first floor of the Faculty of Law building. It operates by appointment and is open weekdays from 09:00–13:00 / 14:00–16:00.

Office of the Dean of Students

This office aims to provide an integrated university life where students and alumni feel supported in all aspects of their personal, cultural, social, and professional development. The Dean of

Students offers various services and programs to support academic and personal growth, instilling a sense of confidence in students as they prepare for life beyond graduation.

Units under the Dean of Students include Student Counselling and Communication Unit, Psychological Counselling Unit, Student Activities Unit, NEU ideas Unit, Career Planning Unit, Social Responsibility Projects Unit, Students with Disabilities Unit, Alumni Affairs Unit. If you require support in accessing courses due to a disability, please contact the Accessible Support Unit: engelsiz@neu.edu.tr

Student Counselling and Communication Unit

In cases where students face unexpected or uncontrollable circumstances that affect their academic responsibilities, they can submit petitions through the online system or via email for issues such as refunds, academic matters, job applications, accommodation, or financial concerns: petitions@neu.edu.tr

Sports Facilities

The university offers a wide range of modern sports facilities to promote a healthy lifestyle among students, staff, and faculty. Facilities include an Olympic swimming pool, tennis courts, football fields, gymnastics halls, and both indoor and outdoor sports complexes.

Our Olympic Indoor Swimming Pool has a 1,000-seat capacity, modern amenities, and a café. Activities such as water polo, diving, and synchronized swimming, as well as swimming lessons, are regularly held. The Sports Tower is a high-tech fitness centre for all age groups, offering classes and sessions in: Fitness, Step, Aerobics, Spinning, TRX, Kangoo Jumps, Pilates, Yoga, Boxing, Karate, Dance education, Nutrition & diet services, with special sections for children and women. RA25 Sports Hall hosts competitions in basketball, handball, volleyball, and badminton, and functions as a venue for ceremonies and concerts with its advanced sound system.

For more details:

<https://neu.edu.tr/kampuste-yasam/spor/>

<https://neu.edu.tr/wp-content/uploads/2018/12/21/spor-kule-brosur-21.12.18.pdf>

Atatürk Culture and Congress Centre (AKKM)

This state-of-the-art venue hosts national and international congresses, seminars, conferences, and cultural events. It features various-sized meeting halls, modern audiovisual equipment, and spaces for art exhibitions, concerts, theatre performances, and more — enhancing campus life through arts and culture.

<https://neu.edu.tr/kampuste-yasam/ataturk-kultur-ve-kongre-merkezi/>

Restaurants and Cafeterias

The campus features a wide range of food and beverage outlets, including the Main Cafeteria, Faculty Cafeteria, Hospital Cafeteria, and others with a total service capacity of 4,500 people. Across campus, there are 22 cafes and restaurants offering healthy, affordable meals, with options for vegetarians and vegans.

Some of the dining facilities include:

Cafe Hastane 1 & 2, Cafe Bigla, Cafe Dental, Cafe Ecza, Cafe Saray, Chicken House, Cafe Library, Cafe Bridge, Cafe Veterinerlik, Gusto Cafe, Cafe Sağlık, Vitamin Cafe, Cafe 535, Cafe AKKM, Book Cafe, Cafe Laundry, Hospital Restaurant, Kebap House, Pizza Pizza, The Kaffo, Bakery & Patisserie, and the 9th Floor Restaurant.

For more information:

<https://neu.edu.tr/kampuste-yasam/kantin-ve-kafeteryalar/>

Market & Supermarket

IKAS Supermarket

Located on our campus, IKAS Supermarket serves campus residents with a wide range of products and extended working hours to meet all their daily needs. Additionally, there is a branch of IKAS Supermarket located under Dormitory Building 1, designed to serve students' essential needs.

Working Hours:

Weekdays/Weekends: 07:30 – 22:00

IKAS Supermarket Express

IKAS Supermarket Express, located within the Near East Campus at Near East Fuel Station, is open 24/7. Discounts available to Near East Group employees are also valid at this location.

NEU Event Park Drift Area

For those seeking speed, control, and excitement, NEU Event Park Drift Area offers an unforgettable driving experience. Under the supervision of two expert instructors, you will not only learn how to drift, but also improve your safe and effective driving techniques. Tire and fuel costs are included in the training packages. Each session lasts 30 minutes.

NEU Event Park offers 4 different training packages, tailored to various expectations. There is even a special course for young car enthusiasts: children aged 6–12 can participate in a manual driving course designed especially for them. For international visitors, accelerated 3-lesson programs are available to help them quickly learn the basics of drifting. Upon successful completion of the training program, a certificate of participation is awarded to all participants.

(excluding tourist guests and children's courses). The drift area can also host special events such as birthday parties and concerts.

Working Hours:

- Weekdays: 16:00 – 21:00
- Weekends: 09:00 – 21:00 Flexible closing hours are available for special events or upon request.

For detailed information about packages and pricing: Phone: +90 548 821 21 24

Accessible Cinema Hall

The newly renovated “Accessible Cinema” Hall at the Faculty of Communication, Near East University, offers a modern and inclusive experience for cinema enthusiasts and event participants. Originally launched in 1997 with the support of Telsim, the hall has recently undergone a comprehensive renovation and is now more equipped and comfortable than ever.

The Accessible Cinema features 40 fixed seats, with a flexible setup that can accommodate up to 60 people when needed. It is equipped with a state-of-the-art projection system compatible with all types of computers and has a powerful sound system to ensure an enhanced audio experience.

One of the hall's most significant features is its fully accessible ramp, which provides seamless access from the outside entrance to the seating area, allowing individuals with disabilities to enjoy events without barriers. In addition to film screenings, the Accessible Cinema is also physically suited for mini workshops and various events.

IKAS Patisserie & Bakery

One of the most popular spots on the Near East University campus, IKAS Patisserie & Bakery welcomes guests with a delightful atmosphere and a wide variety of delicious offerings. The venue has a total seating capacity of 40 people, including 20 indoor and 20 outdoor seats, allowing visitors to enjoy their time both inside and in the open air. In addition to meeting the university's in-house needs for cakes, pastries, savoury snacks, desserts, and ice cream, IKAS Patisserie & Bakery also serves fresh and tasty products to external guests. Soon, it plans to expand its kitchen and begin producing its own bread. For those focused on healthy living,

pecially made diet desserts and drinks designed for pre- and post-workout consumption will also be available.

With an extensive menu of hot and cold beverages, the patisserie caters to all tastes and also takes custom orders for birthday cakes and special celebrations. The outdoor garden area has been designed to offer enjoyment all year round — cool shaded areas in summer, and warm cozy spots with stoves in winter. Parking is available for guests, and the venue especially welcomes those seeking a peaceful breakfast experience on weekends. On Saturdays and Sundays, rich classic and English breakfast options are served until noon — a perfect way to start your day!

Opening Hours: Weekdays / Weekends: 07:00 – 01:00

Photocopy Services

Near East University offers photocopying and printing services at various locations across campus for students and staff. These service centres aim to provide fast and reliable solutions for educational and academic needs. Photocopy centres are available in faculties with high printing demands, such as the Faculty of Architecture, Faculty of Medicine, and Faculty of Education. These centres offer specialized printing services, including large-format AutoCAD printouts for architecture students. Additionally, thesis binding services are available for students preparing their theses. Along with basic services like photocopying and printing, document scanning and various binding options are also provided. A stationery shop within the Near East University Library offers services such as photocopying and thesis binding.

Cyprus Printing Global

Hospital Branch: +90 546 990 01 03

Education Palace Branch: +90 546 990 01 04

Architecture Faculty Branch: +90 546 990 01 05

Nuroğlu Stationery (Library): +90 533 866 89 36

Bank & ATM

On campus, you will find branches of Near East Bank and Türkiye İş Bankası, as well as an ATM for Ziraat Bankası. These banking services are conveniently located to ensure that both students and staff can easily carry out their financial transactions.

Post Office

The Post Office at Near East University provides postal services to all students and staff. It is located on campus for easy access to both send and receive mail.

Location: Ground Floor, Faculty of Economics and Administrative Sciences

Near East Fuel Station

The on-campus fuel station provides university staff with a fast and convenient way to meet their fuel needs. In addition, all Near East University employees can benefit from discounted fuel services by using the Near East Fuel Discount Card. For more information about Near East Fuel Station, please visit the official website: <https://yakindoguakaryakit.com/>

Useful Phone Numbers

For more details about telephone contacts at Near East University and to find the phone numbers for specific departments or services, please visit the university's official website: <https://neu.edu.tr/telefon-rehberi/>

Campus Traffic Rules and Safety

Near East University's campus is subject to specific traffic rules to ensure the **safety and comfort** of students, staff, and visitors. These rules are **monitored 24/7** by NEU personnel, and **penalties may be applied** in case of violations. A full understanding and application of these rules contribute to creating a safer and more orderly campus environment.

Traffic Flow and Right of Way: Traffic on the NEU campus flows in the left lane. Therefore, drivers must keep left and follow the right-of-way rules to ensure smooth traffic movement.

Pedestrian and Bicycle Priority Campus: Please give priority to pedestrians and cyclists in crosswalks and designated bike lanes. Slow down and proceed with caution in these areas to ensure safety.

Speed Limit: The maximum speed limit on campus is 40 km/h. Adhering to this limit significantly reduces the risk of accidents and enhances overall safety.

Horn and Loud Music: Using car horns and playing loud music is prohibited on campus. Following this rule helps maintain a peaceful environment for everyone.

Traffic Signs and Directions: Traffic signs and directional markers are placed throughout the campus to support safe and orderly traffic flow. Please always follow these signs.

Routes and Parking Areas: Use designated driving routes and park only in designated areas in accordance with the campus parking regulations. This ensures safety and avoids traffic disruption.

Monitoring and Security: Traffic rules are regularly monitored by security personnel. Please follow their instructions and do not hesitate to ask for help if needed. Adhering to safety measures ensures a smooth and respectful traffic environment for all. By respecting these rules, we can collectively contribute to a safer and more peaceful campus.

Transportation Services

Near East University provides its staff with comfortable and free transportation options, ensuring easy access to both the campus and surrounding areas. The university's transportation services cover routes that are scheduled according to class and work hours. Free university buses departing from the campus and heading to various regions and the city centre offer a wide transportation network. This service aims to reduce vehicle usage and promote environmentally friendly shared transport. Free transportation services are a significant support in facilitating the daily lives of staff.

Campus–Nicosia and Nicosia–Campus Routes: Shuttle services between the campus and Nicosia operate from 06:45 AM to 10:15 PM. These reciprocal services allow our staff to travel comfortably and safely between the campus and Nicosia. The routes cover a wide area. Detailed information about transportation services and routes is available on the university's website: <https://bus.neu.edu.tr/>

Intercity Free Shuttle Services: Near East University offers free shuttle services for staff commuting from regions such as Kyrenia (Girne), Famagusta (Mağusa), and Güzelyurt. These services are organized to ensure staff can reach the campus comfortably.

In-Campus Shuttles: Within the campus, there is a free shuttle service between the residential area and faculties or other administrative units. These shuttles facilitate quick and easy access across campus.

Walking Distance Accessibility: The Near East University campus is designed to allow safe walking access to most places. Classrooms, the library, the dining hall, and other key facilities are located within short walking distances. The campus design promotes physical activity and minimizes the need for motor vehicles. Additionally, the university provides alternative eco-friendly transport options such as bicycles and electric scooters for staff use.

By offering these transportation options, Near East University enables its staff to easily access campus events and resources. It supports its personnel in maintaining a productive work-life balance through a safe and extensive transportation network across its large campus area.

☒ WHO ARE YOU? WHERE ARE YOU?

- Faculty Founding Year: 2025
- Goal: To become an internationally recognized faculty
- Total Programs: 9 undergraduates, 7 graduate, 3 doctoral
- Languages of Instruction: Turkish and English
- Number of Students: 1,500+

☒ ARTIFICIAL INTELLIGENCE ENGINEERING DEPARTMENT

- Head of Department: Prof. Dr. Gülsüm Aşıksoy
- Contact: gulsum.asiksoy@neu.edu.tr
- Degree Awarded: Bachelor of Science in Artificial Intelligence Engineering
- Total Credit: 240 ECTS
- Elective Courses: At least 5 elective courses

✓ GRADUATION REQUIREMENTS

- Complete all courses with a minimum letter grade of DD/S
- GPA: Minimum 2.00 / 4.00
- 70% course attendance required
- Requirement to take 5 elective courses

☒ REGISTRATION & ADMISSION PROCEDURES

Pay the tuition fee

Register for courses via ogrsis.neu.edu.tr

Get advisor approval

If necessary, make changes during the “add/drop” week

• CONTACT

Dean Office: +Phone: +90 (392) 223 64 64

• MORE INFORMATION

Faculty Web: <https://aif.neu.edu.tr/>

UZEİM: <https://uzeim.neu.edu.tr>

☒ CAMPUS LIFE

- ☒ Library: Open 7/24 open, 1 million books, 150 million digital resources
- 🍴 Dining: 22 restaurant & cafe, vegan/vegetarian menu
- ☒ Sport: Olympic pool, yoga, fitness, dietitian support
- ☒ Psychological Counselling: Free, appointment-based system

☒ DO NOT FORGET!

- At Near East University, education is not only academic; it's an integrated journey of social, cultural, and personal development. Let this brochure be your guide as you take your first steps!