

NEAR EAST UNIVERSITY



FACULTY OF ARTIFICIAL INTELLIGENCE AND INFORMATICS

DATA ANALYTICS ENGINEERING DEPARTMENT

STUDENT HAND BOOK

2025-2026 Academic Year

Contents

Dean's Message	5
About us	6
Faculty Organization Chart	7
Why Faculty of AI and Informatics?	8
Faculty Contact Information	8
Dean	8
Dean Assistant	8
Data Analytics Engineering Department	9
Messafe from the Department Head	9
Program Information	9
Degree Earned	10
Program Admission Requirements	10
Graduation requirements and rules	10
Recognition and Evaluation of Prior Learning	10
Program Information	10
Program achievements	11
Program Structure	12
4-year curriculum of the Data Analytics Engineering Department	13
Data Analytics Department Elective Courses List	17
Additional Information	18
Important Information About Elective Courses	18
Exam Guidelines, Evaluation and Grading	18
Graduation Requirements	21
Academic Calendar	21
2025-2026 Fall Semester	21
2025-2026 Spring Semester	23
2025-2026 Summer Semester	25
Registration and Admission Procedures	27

Registering for Classes	27
Adding/Dropping a Course and Withdrawing from a Course	27
Horizontal-Vertical Transition	27
Communication with Instructors	28
Student participation in class and excuses	28
Student Affairs	28
Campus Life	30
Library	30
Social Activities and Clubs	30
Psychological Counseling Service	30
Dean of Students	30
Student Counseling and Communication Unit	31
Sports Opportunities	31
Atatürk Culture and Congress Center (AKKM)	32
Restaurants and Cafeterias	32
Market and Supermarket	33
IKAS Supermarket Express	33
NEU Event Park Drift Area	33
Accessible Cinema Hall	34
İKAS Patisserie & Bakery	34
Photocopy Services	35
Bank and ATM	36
Mail	36
Near East Fuel	36
Useful Phone Information	36
Campus Traffic Rules and Safety	36
Transportation Services	37
Data Analytics Engineering Department Student Information Brochure	39
❓ WHO ARE YOU, WHERE ARE YOU?	39

DEPARTMENT OF DATA ANALYTICS ENGINEERING	39
✓GRADUATION REQUIREMENTS	39
REGISTRATION & CONSULTANCY PROCESS	39
COMMUNICATION	39
MORE INFORMATION	39
CAMPUS LIFE	39
DON'T FORGET!	40

Dean's Message

Dear Students;

Welcome to Near East University!

I am proud to serve as the Dean of AI and Informatics Faculty during this critical time of the rapidly developing artificial intelligence (AI) field in order to provide key opportunities for our university and our students.

The AI and informatics field create and implement designs to make human life easier. AI researchers now predict that computers will be able to perform tasks that were once considered the prerogative of human beings. They include tasks such as driving trucks, translating languages, writing high school essays, creating art, analyzing forensic evidence, and even work as a surgeon.

Near East University offers the opportunity to achieve this goal by providing high-level engineering education and the ability to adapt designs to the real world.

Departments in the Faculty of Artificial Intelligence and Informatics have certified their educational quality from accreditation organizations such as ABET, ASIIN and MÜDEK.

Our rise in world rankings is built on our reputation for delivering excellent education through faculty research, experiential learning, our growing alumni network and innovative design projects.

There are interesting developments happening every day inside and outside our innovation building on the Near East campus. The outside world will always demand more engineers, and experts in the field of AI and Informatics. We will continue to ensure that our graduates not only join this world, but also lead this field of innovative technologies.

I look forward to continuing to serve and strengthen this university while taking this journey of the great success. We hope you all join us and contribute to this success.

Prof. Dr. Fadi AL-TURJMAN
Dean – Faculty of Artificial Intelligence and Informatics

About Us

The Faculty of Artificial Intelligence and Informatics at Near East University was established to meet the demands of the digital age and to provide a pioneering educational vision in next-generation technologies. Our faculty consists of nine departments: Information and Document Management, Information Systems Engineering, Cybersecurity Engineering, Software Engineering, Computer Informatics Systems, Data Analytics Engineering, Artificial Intelligence Engineering, Management Information Systems, and Computer Engineering.

With its multidisciplinary structure, the faculty integrates fundamental sciences with applied engineering and offers internationally recognized education to more than 1,500 students.

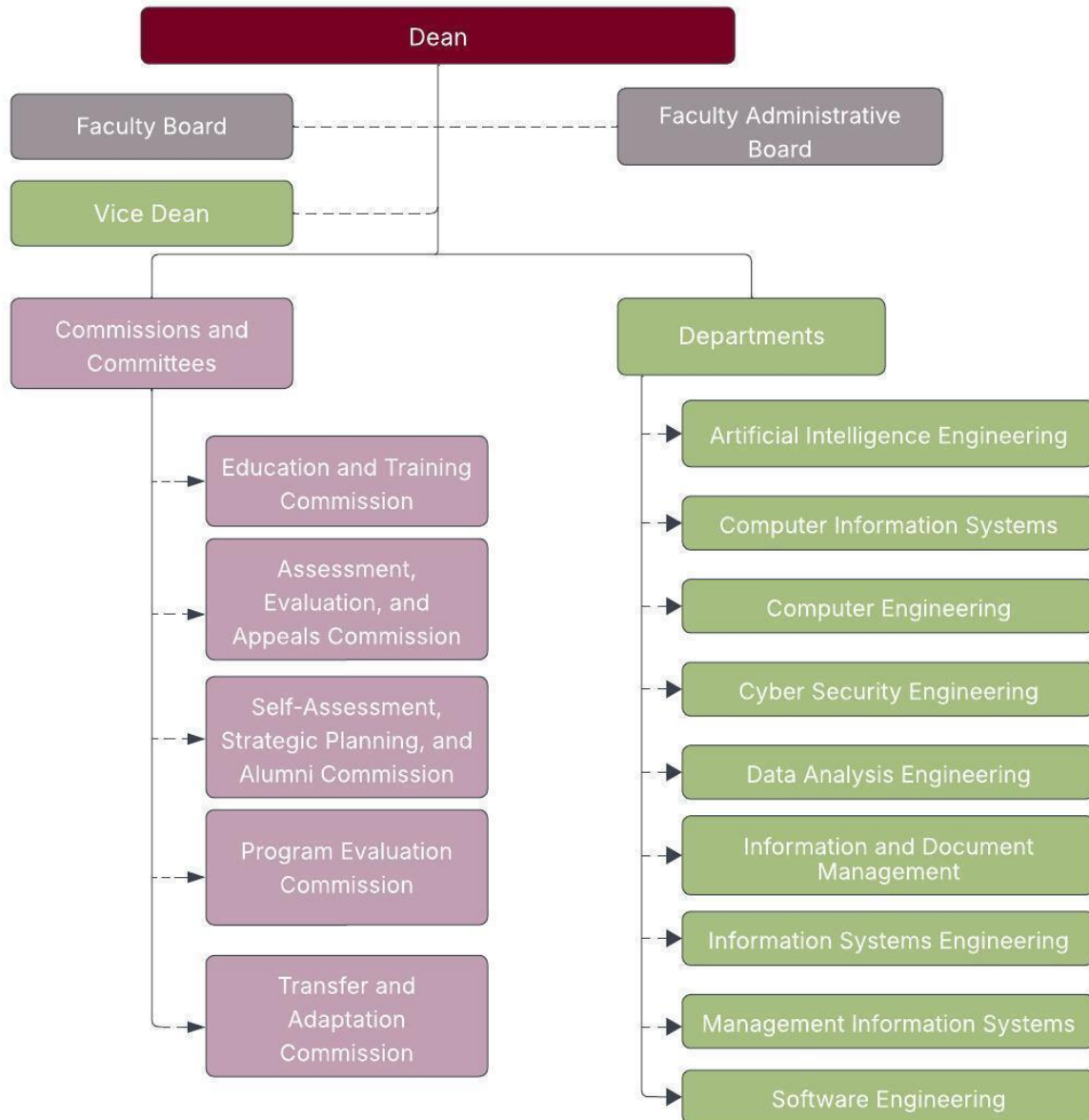
Supported by a strong academic staff and modern research infrastructure, Near East University has been a center of education, science, and culture since 1988. With world-class teaching and laboratory facilities, our university is committed to raising students who are innovative, creative, independent thinkers with a strong sense of responsibility.

With world-class laboratories and educational facilities, our university has an international identity and aims to educate students to be innovative, creative, free-thinking individuals with a strong sense of responsibility. In line with this vision:

- It maintains the title of “the best university in the KKTC” by ranking 601–800 in the **Times Higher Education (THE) World University Rankings**,
- It is ranked 689th in the world and 7th in Turkey on the **US News & World Report “Best Global Universities 2024–2025”** list,
- In the **THE Impact Rankings 2025**, which measure contributions to the United Nations Sustainable Development Goals, it has risen to 43rd place worldwide, and holds 13th place globally in the “Quality Education” category.

The Faculty of Artificial Intelligence and Informatics aims to educate competent, research-oriented graduates with global competitiveness, offering interdisciplinary programs that cover software engineering, cybersecurity, artificial intelligence, data analytics, and many other cutting-edge fields, while continuously strengthening its research capabilities and academic excellence.

Faculty Organization Chart



Why the Faculty of Artificial Intelligence and Informatics?

Artificial intelligence and informatics are critical disciplines that shape not only today but also the future. In line with this vision, Near East University aims to become a center of education, research, and societal contribution with regional and global influence through the Faculty of Artificial Intelligence and Informatics, established in 2025. Our faculty is built not merely on the classical foundations of engineering, but on an innovative and visionary educational approach integrated with ethical values.

This faculty goes beyond traditional engineering schools based solely on mathematics and the natural sciences. It aims to train a new generation of professionals who combine comprehensive theoretical knowledge with practical skills in data science, informatics, and artificial intelligence. Our graduates will be dynamic, creative, and technology-oriented individuals ready to meet the needs of the rapidly changing global workforce.

By its very nature, artificial intelligence is interdisciplinary. Therefore, the establishment of our faculty will strengthen interaction among different academic fields within our university and create a unique environment for advanced research, innovation, and project development. Our faculty aims not only to graduate individuals who contribute to scientific projects, but also to cultivate leaders who will guide and shape these projects.

Faculty Contact Information

Dean

Prof. Dr. Fadi AL-TURJMAN

Near East University Faculty of Artificial Intelligence and Informatics

Yakın Doğu Boulevard, Postal Code: 99138 Nicosia / TRNC Mersin 10 – TURKEY

Tel: +90 (392) 223 64 64

Email: fadi.alturjman@neu.edu.tr

Dean's Assistant

Sinem Alturjman

E-posta: yapayzekavebilisim.dekanlik@neu.edu.tr

DATA ANALYTICS ENGINEERING DEPARTMENT

Message from the Head of Department

Dear Students,

It is my great pleasure to welcome you to the Department of Data Analytics Engineering at Near East University, established in 2024 under the Faculty of Artificial Intelligence and Informatics.

We live in an era where data is often described as the new oil—a resource that drives innovation, competitiveness, and societal development. Yet, data alone is not enough; it is the ability to engineer systems that can collect, process, analyse, and transform vast data streams into meaningful knowledge that truly makes the difference. This is where our department stands out.

Unlike traditional data science or business analytics programs, our Data Analytics Engineering program equips students with both deep analytical skills and robust engineering competencies. Our curriculum integrates mathematics, statistics, programming, machine learning, and artificial intelligence with big-data architectures, distributed systems, cloud computing, IoT, and information engineering. In addition, compulsory industrial practice and senior capstone projects ensure that our graduates not only master theory but also gain the hands-on experience required to tackle real-world problems.

Our mission is to educate professionals who are capable of designing and managing end-to-end data analytics systems that are ethical, sustainable, and impactful. Our vision is to position the department as a regional and international leader in data analytics engineering, producing graduates who can innovate across various industries, including finance, healthcare, telecommunications, e-commerce, and smart cities.

I warmly invite you to join our growing academic community, take advantage of the opportunities offered by our program, and contribute to shaping a future where data and engineering work together to create meaningful solutions for society.

Welcome to the Department of Data Analytics Engineering, where we transform data into value and engineers into innovators.

With best regards,

Assoc. Prof. Dr. Seren Başaran

Head of the Department of Data Analytics Engineering

E-mail: seren.basaran@neu.edu.tr

Degree Earned

The Bachelor of Science (BSc) in Data Analytics Engineering is awarded at:

- Turkish Higher Education Qualifications Framework (TYYÇ): Level 6
- European Qualifications Framework for Lifelong Learning (EQF-LLL): Level 6
- Qualifications Framework in the European Higher Education Area (QF-EHEA): First Cycle (Bachelor's degree)

This level corresponds to a first-cycle university degree, providing graduates with the academic and professional competences required for direct entry into the labour market as well as eligibility for second-cycle (Master's) programmes in related fields.

Program Admission Requirements

1. General Admission

The Bachelor of Science (BSc) in Data Analytics Engineering accepts international students and students from the Turkish Republic of Northern Cyprus (TRNC).

- International Applicants
 - Admission is based on either:
 - an acceptable score from an international examination (such as SAT, ACT, or an equivalent recognised exam), or
 - a sufficiently high high school diploma score that meets Near East University's criteria.
 - Proof of English language proficiency is required, since the medium of instruction is English. Accepted evidence may include internationally recognised English tests or successful completion of NEU's English Proficiency Examination.
- TRNC Applicants
 - Candidates from the Turkish Republic of Northern Cyprus are admitted according to the regulations set by Near East University and the TRNC Ministry of Education.

Graduation Requirements and Rules

To graduate, students in this undergraduate program must have a Weighted Grade Point Average (GPA) of at least 2.00/4.00 and have completed all program courses with a minimum letter grade of DD/S. The minimum ECTS credit required for graduation is 240.

Recognition of Prior Learning (RPL) and Course Exemptions

At Near East University, full-time students may be exempted from certain courses in accordance with the University's relevant bylaws and regulations.

- If a student has successfully completed a course at another accredited higher education institution, and the course content and learning outcomes are deemed equivalent to a course offered in the Data Analytics Engineering program, the student may request exemption.
- The exemption is granted only after the evaluation and approval of the related faculty/graduate school and the Department of Data Analytics Engineering.

Credits and grades approved through this process are officially recorded, and the exempted course is considered fulfilled toward the 240 ECTS graduation requirement, provided that all other university and departmental regulations are met.

Program Information

The Faculty of Artificial Intelligence & Informatics – Near East University
Year of Establishment: 2024

Program Overview

The Bachelor of Science in Data Analytics Engineering (DAE) is a four-year undergraduate program designed to educate engineers who can transform large, complex and heterogeneous data into actionable knowledge. Unlike traditional data science degrees that focus mainly on statistical analysis and machine learning, Data Analytics Engineering integrates full-stack engineering competencies—from data acquisition and storage to large-scale distributed computing and intelligent decision support.

Students gain a balanced education in mathematics and statistics, computer science and engineering, and domain-specific analytics applications, supported by extensive hands-on experience and industry practice.

Program Objectives

Graduates of the DAE program will:

- Apply advanced mathematical, statistical and computational methods to model and solve data-intensive problems.
- Design, implement and manage large-scale data pipelines, databases, and cloud-based analytics platforms.
- Develop and deploy machine learning and artificial intelligence models for predictive and prescriptive analytics.
- Communicate analytical results effectively through data visualization and professional reporting.

- Demonstrate ethical responsibility, data privacy awareness, and understanding of the societal and sustainability impact of data-driven solutions.
- Engage in lifelong learning and adapt to rapidly evolving technologies.

Key Features of the Program

- **Engineering Focus:** Strong emphasis on big-data architectures, distributed computing, cloud/IoT integration and systems engineering—distinguishing it from typical data science or business analytics programs.
- **Hands-on Learning:** Two summer practice internships and a two-semester senior capstone project provide real-world engineering and research experience.
- **Cutting-Edge Curriculum:** Courses include Machine Learning I & II, Prescriptive Analytics, Parallelism & Distributed Systems, Advanced Databases, and Big Data Systems.
- **Ethics & Sustainability:** Dedicated outcomes and courses (e.g., Engineering Ethics, Occupational Health & Safety) ensure graduates are prepared to use data responsibly.
- **International Outlook:** English-medium instruction and a curriculum aligned with TYYÇ (Turkish Higher Education Qualifications Framework) and ABET/ASIIN engineering accreditation standards.

Career Opportunities

Graduates will be prepared for roles such as:

- Data Analytics Engineer, Big Data Engineer, Machine Learning Engineer, Data Platform Architect, Business Intelligence Engineer, or AI Solutions Engineer
- Positions in finance, healthcare, telecommunications, e-commerce, manufacturing, smart cities and public sector organizations.
- Excellent foundation for postgraduate studies (MSc, PhD) in Data Science, Artificial Intelligence, or related engineering fields.

Program Duration & Degree Awarded

- **Duration:** 4 years (8 semesters), full-time.
- **Degree Awarded:** Bachelor of Science (BSc) in Data Analytics Engineering.

Language of Instruction: English

The Data Analytics Engineering program at Near East University equips graduates not only to analyse data but also to engineer the scalable systems that power modern data-driven decision making—providing a distinctive advantage over conventional data science programs.

Program Learning Outcomes

Graduates of the 4-year Data Analytics Engineering program will be able to:

Knowledge (TYYÇ 6.1)

PO1. Demonstrate comprehensive knowledge of mathematics, statistics, computer science, and engineering fundamentals to model, analyze, and solve data-driven problems.

PO2. Explain and apply core concepts of data engineering, databases, information theory, and big data systems for designing scalable data pipelines and architectures.

PO3. Describe advanced methods in machine learning, artificial intelligence, and prescriptive/predictive analytics, including their theoretical foundations and practical applications.

Skills (TYYÇ 6.2)

PO4. Collect, clean, manage, and integrate heterogeneous data sources, ensuring data quality and reproducibility.

PO5. Apply information systems, artificial intelligence, software, and data analysis tools effectively to design and implement solutions that address business and engineering problems.

PO6. Apply statistical modeling, mathematical optimization, and simulation techniques to extract meaningful patterns, make predictions, and support evidence-based decision making.

PO7. Visualize and communicate complex data and analytical results effectively using modern visualization tools and interactive dashboards.

PO8. Design and conduct experiments or projects—such as capstone and summer practices—integrating theoretical knowledge into real-world data analytics applications.

Competences

Personal & Occupational Competence (TYYÇ 6.3)

PO9. Work effectively in multidisciplinary and multicultural teams, demonstrating leadership, project management, and professional responsibility in engineering contexts.

PO10. Adhere to ethical principles, data privacy regulations (e.g., GDPR), and professional standards when collecting, processing, and analyzing data.

Learning Competence (TYYÇ 6.4)

PO11. Engage in lifelong learning by following emerging trends in AI, cloud computing, IoT, and other evolving technologies in data analytics.

PO12. Critically evaluate scientific literature, emerging tools, and industry best practices to update professional knowledge.

Communication & Social Competence (TYYÇ 6.5)

PO13. Communicate effectively in written and oral form, prepare professional documents, present analytical results, and interact confidently with diverse stakeholders in English and with intercultural awareness.

Field-Specific Competence (TYYÇ 6.6)

PO14. Integrate data analytics engineering solutions into domain-specific contexts (e.g., finance, healthcare, smart cities, satellite imagery, robotics) to create societal and economic value.

PO15. Recognize the societal, environmental, and sustainability impacts of data-driven technologies and contribute responsibly to sustainable development goals (SDGs).

Program Structure

The BSc in Data Analytics Engineering comprises a total of 240 ECTS credits, distributed across four years of study. Approximately 75 % of the curriculum (around 180 ECTS) is devoted to core compulsory courses, providing a solid foundation in mathematics, statistics, programming, data engineering and machine learning. Around 12 % of the credits (about 30 ECTS) are earned through technical electives, which allow students to specialise in advanced topics such as Big Data Systems, AI & Internet of Things, Fuzzy Systems, Health Informatics, or Deep Reinforcement Learning. A further 12 % (about 30 ECTS) is allocated to capstone experiences and industrial practice, including Senior Project I–II and Summer Practice I–II, giving students hands-on professional and engineering design experience. The remaining approximately 6 % (around 15 ECTS) covers university common and general education courses—for example English I–II, Oral Communication Skills, 21st Century Skills, Career Planning, Cyprus History & Culture, Atatürk Principles I–II and Occupational Health & Safety—ensuring that graduates also develop strong communication abilities, ethical awareness and intercultural competence. This distribution highlights the program’s strong engineering orientation, its emphasis on practical, real-world application, and the flexibility for students to pursue individual areas of interest.

The four-year program and its list of elective courses are presented below:

4-Year degree BSc Curriculum of the Data Analytics Engineering Department

1st Semester

CODE	COURSE NAME	DERS ADI	C/E	T	P	C	E
MTH113	LINEAR ALGEBRA	DOĞRUSAL CEBİR	C	3	0	3	5
AII102	PROGRAMMING AND PROBLEM SOLVING	PROGRAMLAMA VE PROBLEM ÇÖZME	C	3	2	4	5
ENG101	ENGLISH I	İNGİLİZCE I	C	3	0	2	3
MTH101	CALCULUS I	MATEMATİK I	C	4	0	4	5
PHY101	GENERAL PHYSICS I	GENEL FİZİK I	C	3	2	4	5
CAM100	CAMPUS ORIENTATION	KAMPÜSE UYUM	C	2	0	0	2
CHM101	GENERAL CHEMISTRY I	GENEL KİMYA I	C	3	2	4	5
Total				21	6	21	30

2nd Semester

CODE	COURSE NAME	DERS ADI	C/E	T	P	C	E
AII104	DISCRETE STRUCTURES	DISKRİT YAPILAR	C	3	0	3	5
ENG102	ENGLISH II	İNGİLİZCE II	C	3	0	2	3
MTH102	CALCULUS II	MATEMATİK II	C	4	0	4	6
PHY102	GENERAL PHYSICS II	GENEL FİZİK II	C	3	2	4	6
AII108	OBJECT ORIENTED PROGRAMMING	NESNE YÖNÜMLÜ PROGRAMLAMA	C	2	2	3	6
YIT101	TURKISH FOR FOREIGNERS I	YABANCILAR İÇİN TÜRKÇE I	C	2	0	2	2
GEC351	21st CENTURY SKILLS	21. YÜZYIL BECERİLERİ	C	2	0	0	2
Total				19	4	18	30

3rd Semester

CODE	COURSE NAME	DERS ADI	C/E	T	P	C	E
DAE001	ADVANCED ALGEBRA AND CALCULUS	İLERİ CEBİR VE HESAPLAMA	C	3	2	4	6
AII201	DATA STRUCTURES & ALGORITHMS	VERİ YAPILARI VE ALGORİTMALAR	C	3	2	4	6
DAE003	INFORMATION THEORY	BİLGİ TEORİSİ	E	3	0	4	4
MTH 201	DIFFERENTIAL EQUATIONS	DİFERANSİYEL DENKLEMLER	C	4	0	4	6
DAE002	INTRODUCTION TO AUDIOVISUAL PROCESSING	GÖRSEL-İŞİTSEL İŞLEME GİRİŞ	E	3	0	3	4
AIT 103	ATATÜRK PRINCIPLES AND REFORMS I	ATATÜRK İLKELERİ VE İNKILAP TARİHİ I	C	2	0	2	2
YIT102	TURKISH FOR FOREIGNERS II	YABANCILAR İÇİN TÜRKÇE II	C	2	0	2	2
Total				20	4	23	30

4th Semester

CODE	COURSE NAME	DERS ADI	C/E	T	P	C	E
AII202	DATABASE MANAGEMENT SYSTEMS	VERİ TABANI YÖNETİM SİSTEMLERİ	C	4	0	4	5
DAE004	DATA ENGINEERING THEORY	VERİ MÜHENDİSLİĞİ TEORİSİ	E	3	2	3	5
DAE005	SIGNALS AND SYSTEMS	SINYAL VE SİSTEMLER	C	4	0	4	4
MTH251	PROBABILITY AND STATISTICS	OLASILIK VE İSTATİSTİK	C	3	0	3	6
AIT104	ATATÜRK PRINCIPLES AND REFORMS II	ATATÜRK İLKELERİ VE İNKILAP TARİHİ II	C	2	0	2	2
AIE299	SUMMER TRAINING I	STAJ 1	C	0	2	0	6
CHC100	CYPRUS HISTORY AND CULTURE	KIBRIS KÜLTÜRÜ VE TARİHİ	E	2	0	0	2
Total				18	4	16	30

5th Semester

CODE	COURSE NAME	DERS ADI	C/E	T	P	C	E
DAE007	PROBABILITY AND STATISTICS 2	OLASILIK VE İSTATİSTİK 2	C	3	0	3	5
DAE006	MACHINE LEARNING FOR SATELLITE IMAGERY	UYDU GÖRÜNTÜLERİ İÇİN MAKİNE ÖĞRENİMİ	E	2	2	3	5
ENG201	ORAL COMMUNICATION SKILLS	SÖZLÜ İLETİŞİM BECERİLERİ	C	3	0	3	4
DAE008	PRESCRIPTIVE ANALYTICS I	ÖNGÖRÜCÜ ANALİTİK I	E	3	0	3	5
AII439	OCCUPATIONAL HEALTH AND SAFETY I	İŞ SAĞLIĞI VE GÜVENLİĞİ I	C	2	0	2	4
DAE009	SYSTEMS ENGINEERING	SİSTEM MÜHENDİSLİĞİ	E	3	0	3	5
CAR100	CAREER PLANNING	KARIYER PLANLAMA	C	2	0	0	2
				18	2	17	#

6th Semester

CODE	COURSE NAME	DERS ADI	C/E	T	P	C	E
DAE011	MACHINE LEARNING 1	MAKİNE ÖĞRENMESİ 1	E	3	0	4	5
DAE012	MATHEMATICAL OPTIMIZATION	MATEMATİKSEL OPTİMİZASYON	E	3	2	4	5
DAE013	PARALLELISM AND DISTRIBUTED SYSTEMS	PARALELLİK VE DAĞITIK SİSTEMLER	E	3	0	4	5
DAE014	ADVANCED DATABASES	GELİŞMİŞ VERİTABANLARI	E	4	2	4	5
AIE399	SUMMER TRAINING II	STAJ II	C	0	0	0	5
DAE010	PRESCRIPTIVE ANALYTICS II	ÖNGÖRÜCÜ ANALİTİK II	E	3	0	4	5
Total				16	4	20	30

7th Semester

CODE	COURSE NAME	DERS ADI	C/E	T	P	C	E
DAE015	MACHINE LEARNING 2	MAKİNE ÖĞRENMESİ 2	E	3	0	3	5
DAE016	ENTREPRENEURSHIP AND INNOVATION	GİRİŞİMCİLİK VE İNOVASYON	E	3	0	3	4
DAE018	SENIOR ADVANCED DESIGN PROJECT I	KIDEMLİ İLERİ TASARIM PROJESİ I	C	4	2	4	6
TE	TECHNICAL ELECTIVE	TEKNİK SEÇMELİ	E	3	0	3	5
TE	TECHNICAL ELECTIVE	TEKNİK SEÇMELİ	E	3	0	3	5
DAE017	INFORMATION RETRIEVAL AND ANALYSIS	BİLGİ ALMA VE ANALİZİ	E	3	2	4	5
Total				19	4	20	30

8th Semester

CODE	COURSE NAME	DERS ADI	C/E	T	P	C	E
AII429	ENGINEERING ETHICS	MÜHENDİSLİK ETİĞİ	C	3	0	3	5
DAE019	SENIOR ADVANCED DESIGN PROJECT II	KIDEMLI İLERİ TASARIM PROJESİ II	C	3	0	3	5
DAE020	INFORMATION VISUALIZATION	BILGI GÖRSELLEŞTİRME	E	3	0	3	4
TE	TECHNICAL ELECTIVE	TEKNİK SEÇMELİ	E	3	0	3	5
TE	TECHNICAL ELECTIVE	TEKNİK SEÇMELİ	E	3	0	3	5
DAE021	IMAGE PROCESSING AND MACHINE VISION	GÖRÜNTÜ İŞLEME VE MAKİNE GÖRÜŞÜ	E	3	0	3	4
AII440	OCCUPATIONAL HEALTH AND SAFETY II	İŞ SAĞLIĞI VE GÜVENLİĞİ II	C	2	0	3	2
Total				18	0	21	30

List of Elective Courses for the Data Analytics Engineering Department

CODE	COURSE NAME	T	P	C	E
AII419	IMAGE PROCESSING	2	2	3	5
AII415	DECISION MAKING	2	2	3	5
AIE411	ADVANCED DATA ANALYSIS	2	2	3	5
AIE412	INFORMATION RETRIEVAL AND WEB SEARCH	2	2	3	5
AIE413	HUMAN-ROBOT INTERACTION	2	2	3	5
AIE414	DEEP REINFORCEMENT LEARNING AND CONTROL	2	2	3	5
AIE415	MOBILE ROBOT PROGRAMMING	2	2	3	5
AIE416	AUTONOMOUS AGENTS	2	2	3	5
AIE417	INTRODUCTION TO QUANTUM COMPUTING	2	2	3	5
AIE418	COMPUTER ANIMATION & VISUALIZATION	2	2	3	5
AIE419	ALGORITHMIC GAME THEORY AND ITS APPLICATIONS	2	2	3	5
AIE420	FUZZY SYSTEMS	2	2	3	5
AIE458	AI AND INTERNET OF THINGS	2	2	3	5
AIE457	AI AND CLOUD COMPUTING	2	2	3	5
DAE022	BIG DATA SYSTEMS	2	2	3	5
DAE023	DATA SECURITY AND PRIVACY FOR ANALYTICS	2	2	3	5
DAE024	BUSINESS ANALYTICS	2	2	3	5
DAE025	HEALTH INFORMATICS	2	2	3	5

Additional Information

A total of 240 ECTS credits must be taken to graduate. Data Analytics Engineering students must complete the required courses and technical electives to achieve a total of 240 ECTS credits. Otherwise, they will not be considered to have fulfilled the program's graduation requirements.

Course lectures require at least 70% of attendance. Students who fail to meet the attendance requirement will be assigned a letter grade of NA for the relevant course. An NA (Never Attended) grade is assigned to students who fail to meet the attendance requirements and who lose their right to participate in end-of-term assessments. Students must also maintain 70% attendance for the same course in the following semester.

Important Information About Elective Courses

Students in the Data Analytics Engineering program must take four technical elective courses, in addition to 16 restricted electives, to graduate. These courses must be chosen from the program's elective course list. Courses not listed in the curriculum cannot be considered as electives.

Exam Guidelines, Evaluation and Grading

At our university, course performance assessment is generally based on face-to-face exams, including midterm and final exams. However, some courses also utilize alternative assessment methods such as project assignments, presentations, homework assignments, quizzes, and group work to encourage active student participation and assess various skills.

The assessment method for each course may vary depending on the specifics of the course and the instructor's preferences. Course evaluation criteria are announced to students by the instructor at the beginning of the semester and clearly stated in the course syllabus.

Students' course success grades are calculated by taking the weighted average of the exams, assignments, and any other assessment tools administered within the course. Therefore, it is important for students to actively participate not only in the exams but also in all assessment elements administered throughout the semester.

For each course taken at NEU, students are assigned one of the letter grades described below based on an evaluation conducted by the course instructor. Each letter grade carries an ECTS credit weight.

GRADE	LETTER GRADE	MULTIPLIER	AKTS GRADE
90-100	AA	4.0	A
85-89	BA	3.5	B*
80-84	BB	3.0	B*
75-79	CB	2.5	C*
70-74	CC	2.0	C*
60-69	DC	1.5	D
50-59	DD	1.0	E
49-00	FF	0.0	F

To be considered successful in any course, students must receive a minimum grade of DD for level 5 (associate degree) and level 6 (undergraduate) programs, a minimum grade of CC for level 7 (master's degree) programs, and a minimum grade of BB for level 8 (doctoral) programs. For courses not included in the general average, students must receive a grade of S (Satisfactory).

In addition, each local letter grade also has an ECTS equivalent. This supports inter-institutional mobility.

The table above is used for all courses at NEU. In addition to these letter grades, the following letter grades are also recorded on students' course transcripts:

I: Incomplete

S: Satisfactory Completion

U: Unsatisfactory

P: Successful Progress

NP: Not Successful Progress

EX: Exempt

NI: Not Included

W: Withdrawal

NA: Never Attended

An I (Incomplete) grade is given to students who fail to complete the course requirements by the due date of the relevant semester due to a valid reason acceptable to the academic staff offering the course. Students who receive an I grade must complete all remaining requirements no later than one week after the due date for their course grades. However, in exceptional cases, this

deadline may be extended to two weeks before the start of the next semester by the decision of the relevant academic unit administrator and the board of directors. Students who fail to complete their requirements by the assigned date will automatically have their I grades converted to FF or U.

S (Satisfactory) grades A U (Unsatisfactory) grade is given to students who fail non-credit courses.

A P (Successful Progress) grade is given to students who demonstrate the expected performance in courses not included in the GPA and whose requirements exceed one semester.

A NP (Not Successful Progress) grade is given to students who fail to demonstrate the expected performance in courses not included in the GPA and whose requirements exceed one semester.

An EX (Exempt) grade is given to students who are exempt from the relevant course in the program.

A NI (Not included) grade is given for students' performance in courses taken but not included in the GPA. These grades are noted on the student's transcript but are not included in the courses taken within the program in which they are registered.

A W (Withdrawal) grade is given if the student withdraws from a course after the add/drop deadline for the relevant semester and within 10 weeks of the semester beginning, with the recommendation of their academic advisor and the permission of the academic staff teaching the course. A student cannot withdraw from any course during the first two semesters of the program. Furthermore, a student who has previously received a W grade in any course and whose grade is not included in the program Students who are not included in the average cannot withdraw from the same course again. Students in associate degree programs may withdraw from a maximum of two courses, while students in undergraduate programs may withdraw from a maximum of four. Students must retake the withdrawn course in the next semester it is offered.

The NA (Never Attended) grade is given to students who fail to meet the attendance requirements and lose their right to participate in end-of-term assessments. The NA grade is not included in the average calculation.

Student transcripts show letter grades corresponding to both national and ECTS credits.

Graduation Requirements

In order to graduate from this undergraduate program, the students are required; to succeed in all of the courses listed in the curriculum of the program by getting the grade of at least DD/S with a minimum of 240 ECTS to have a Cumulative Grade Point Average (CGPA) of 2.00 out of 4.00 to complete their compulsory internship in a specified duration and quality.

Academic Calendar

In this section, you can find important dates for the relevant academic year. The academic calendar contains critical information regarding course registration, semester start and end dates, exam weeks, holidays, and other academic processes.

Students are strongly encouraged to carefully review the calendar and follow the dates to ensure sound academic planning. The calendar, updated at the beginning of each semester, is also available on the faculty website or from the student affairs office.

2025-2026 Fall Semester

July 01, 2025; Tuesday	Start of internship rotations for Faculty of Medicine Term 6
September 8, 2025; Monday	Deadline for First Tuition Payment (Annual full payment or first installment)
September 8, 2025; Monday	Start of Courses for Faculty of Medicine Terms 4 and 5
September 08-12, 2025; Monday-Friday	Course assignments to academic staff
September 11-15, 2025; Thursday-Monday	Course activations
September 15, 2025; Monday	Start of Courses for Faculty of Medicine Terms 2 and 3
September 15, 2025; Monday	English Preparatory School, Turkish and Arabic Proficiency Exams for undergraduate students
September 15-19, 2025; Monday-Friday	Course Registration
September 18, 2025; Thursday	First English Proficiency Exam for graduate students
September 19, 2025; Friday	Deadline for graduate thesis juries

September 22, 2025; Monday	Start of Courses (Including all Language Preparatory Schools)
September 29, 2025; Monday	Start of Courses for Faculty of Medicine Term 1
September 30, 2025; Tuesday	Exemption Exams for Common Courses (English Departments)
October 02, 2025; Thursday	Exemption Exams for Common Courses (Turkish Departments)
October 08, 2025; Wednesday	Deadline for 2nd Installment of 8-Installment Tuition Payment
October 08, 2025; Wednesday	Deadline for grade changes of previous term's 'I' (Incomplete)
October 10, 2025; Friday	Last Day for International Student Withdrawals
October 10, 2025; Friday	Last Day for Course Add/Drop
October 24, 2025; Friday	Deadline for Late Registration
October 29, 2025; Wednesday	Official Holiday
November 07, 2025; Friday	Last Day for Add/Drop for Newly Registered International Students
November 08, 2025; Saturday	Deadline for 3rd Installment of 8-Installment Tuition Payment
November 08-14, 2025; Saturday-Friday	Midterm Exams
November 15, 2025; Saturday	Official Holiday
November 17-21, 2025; Monday-Friday	English Prep School Module 1 Final Exams
December 08, 2025; Monday	Deadline for 4th Installment of 8-Installment Tuition Payment
December 08, 2025; Monday	Start of course/program planning for next academic term
December 19, 2025; Friday	Last Day to Withdraw from a Course
December 23, 2025; Tuesday	Deadline to Enter NA Grades into System
December 25, 2025; Thursday	Administrative Holiday for Students
December 30, 2025; Tuesday	Last Day of Classes
January 01, 2026; Thursday	Official Holiday

January 02, 2026; Friday	Administrative Holiday for Students
January 05-14, 2026; Monday-Wednesday	Final Exams
January 08, 2026; Thursday	Deadline for 2nd Installment of 2-Installment Payments
January 08, 2026; Thursday	Deadline for 5th Installment of 8-Installment Payments
January 12-18, 2026; Monday-Sunday	Mid-term break for Faculty of Medicine Term 4
January 17, 2026; Saturday	Deadline for Grade Submission
January 19-23, 2026; Monday-Friday	English Prep School Module 2 Final Exams
January 20-21, 2026; Tuesday-Wednesday	Graduation Ceremonies
January 26 - February 08, 2026; Monday-Sunday	Mid-term break for Faculty of Medicine Terms 1, 2, and 3
February 02-08, 2026; Monday-Sunday	Mid-term break for Faculty of Medicine Term 5
2025-2026 Spring Semester	
January 29-30, 2026; Thursday-Friday	Course assignments to academic staff
February 2-3, 2026; Monday-Tuesday	Course activations
February 02-06, 2026; Monday-Friday	Diploma Distribution
February 04-06, 2026; Wednesday-Friday	Course Registration
February 05, 2026; Thursday	First English Proficiency Exam for graduate students
February 06, 2026; Friday	Deadline for graduate thesis juries

February 06, 2026; Friday	English, Turkish and Arabic Proficiency Exams for undergraduate students
February 08, 2026; Sunday	Deadline for 6th Installment of 8-Installment Payments
February 09, 2026; Monday	Start of Courses (Including all Language Preparatory Schools)
February 16, 2026; Monday	Exemption Exams for Common Courses (English Departments)
February 17, 2026; Tuesday	Exemption Exams for Common Courses (Turkish Departments)
February 26, 2026; Thursday	Deadline for changing 'I' (Incomplete) grades of previous term
February 27, 2026; Friday	Last Day for International Student Withdrawals
February 27, 2026; Friday	Last Day for Course Add/Drop
March 06, 2026; Friday	Deadline for Late Registration
March 08, 2026; Sunday	Deadline for 7th Installment of 8-Installment Payments
March 19-22, 2026; Thursday-Sunday	Official Holiday
March 30, 2026; Monday	Last Day for Add/Drop for Newly Registered International Students
April 06-11, 2026; Monday-Saturday	Midterm Exams
April 06-10, 2026; Monday-Friday	English Prep School Module 3 Final Exams
April 08, 2026; Wednesday	Deadline for 8th Installment of 8-Installment Payments
April 23, 2026; Thursday	Official Holiday
May 01, 2026; Friday	Official Holiday
May 08, 2026; Friday	Last Day to Withdraw from a Course
May 08, 2026; Friday	Start of course/program planning for next academic term
May 19, 2026; Tuesday	Official Holiday
May 18, 2026; Monday	Deadline to Enter NA Grades into System
May 22, 2026; Friday	Last Day of Classes

May 22, 2026; Friday	End of Courses for Faculty of Medicine Terms 1, 2, and 3
May 27-31, 2026; Wednesday-Sunday	Official Holiday
June 01-10, 2026; Monday-Wednesday	Final Exams
June 05, 2026; Friday	End of Courses for Faculty of Medicine Terms 4 and 5
June 11, 2026; Thursday	Final Exam for Faculty of Medicine Term 2
June 12, 2026; Friday	Final Exam for Faculty of Medicine Terms 1 and 3
June 12, 2026; Friday	Deadline for Grade Submission
June 12, 2026; Friday	Deadline for Summer School Applications
June 15, 2026; Monday	Make-up Exam Applications (Annual Programs)
June 15-19, 2026; Monday-Friday	English Prep School Module 4 Final Exams
June 16-19, 2026; Tuesday-Friday	Make-up Exams (Annual Programs)
June 22, 2026; Monday	End of Term (Deadline for Make-up Exam Results)
June 22-26, 2026; Monday-Friday	Graduation Ceremonies
January 29-30, 2026; Thursday-Friday	Course assignments to academic staff
2025-2026 Summer Semester	
June 22-24, 2026; Monday-Wednesday	Course assignments to academic staff
June 22-24, 2026; Monday-Wednesday	Course activations
June 24, 2026; Wednesday	English Proficiency Exam for graduate students
June 24-26, 2026; Wednesday-Friday	Course Registration
June 26, 2026; Friday	Deadline for graduate thesis juries

June 26, 2026; Friday	English Proficiency Exam for undergraduate students
June 29, 2026; Monday	End of Courses for Faculty of Medicine Term 6
June 29, 2026; Monday	Start of Courses (Including all Language Preparatory Schools)
July 20, 2026; Monday	Official Holiday
August 01, 2026; Saturday	Official Holiday
August 07, 2026; Friday	Last Day of Classes (Including all Language Preparatory Schools)
August 10-15, 2026; Monday-Saturday	Final Exams (Including all Language Preparatory Schools)
August 17, 2026; Monday	Deadline for Grade Submission
August 18, 2026; Tuesday	End of Term
August 24-28, 2026; Monday-Friday	Diploma Distribution

Registration and Admission Procedures

The Student Affairs Office is located in the Faculty of Pharmacy building and is open Monday-Friday, 8:00 AM to 5:00 PM. Students can obtain information about the faculties, register, and obtain documents such as exam entry documents, student certificates, and transcripts.

Registering for Classes

Course registration is conducted online each semester. After students pay their semester fees, they can register for their courses through the online registration system at <https://register.neu.edu.tr/>. To access this site, each student is assigned a student ID number and personal password by the faculty secretariat. After selecting their courses online, students must also obtain approval from their advisors through the system. The relevant registration process is also available on the university's website. However, students who have not paid their tuition fees and have not submitted their receipts to the Student Affairs Office cannot access the online system. Registration is completed by their departmental advisors. Course registration is also handled through the consultation of their advisors in the relevant departments. Students can meet with their advisors during the dates specified in the academic calendar to obtain information about their courses and make their course selections.

Adding/Dropping a Course and Withdrawing from a Course

Course add/drop and withdrawal dates are determined for each semester and announced in the academic calendar. During this period, students have the opportunity to attend the courses they are registered for and, if they wish, change their courses by adding or dropping. Course withdrawals/changing/adding are limited to the time period specified in the academic calendar. Students can complete any requested action by consulting with their advisor..

Horizontal-Vertical Transition

Students wishing to transfer through horizontal or vertical transfer must apply to the Student Affairs Office. Once their application is approved, they must submit a transcript from their current university to the department they were accepted to. Before the student begins their studies, the Department Head/Dean and their assigned advisor will review the student's previous university courses to determine whether they are equivalent to the courses in their current department. (For citizens of the Republic of Turkey, you can review the Higher Education Council's rules and university regulations regarding transfers to Near East University at the following addresses:

<http://www.yok.gov.tr/4767>

<https://neu.edu.tr/wp-content/uploads/2023/05/29/YDU-Yatay-Gecis-Yonetmeligi-29.05.2023.pdf>

Communication with Instructors

Subject	Description
Course Materials and Contents	All course materials, weekly content and announcements are shared on the UZEBIM platform: https://uzebim.neu.edu.tr/
Contact via Email	Faculty members can be contacted via their institutional e-mail addresses.
Face to Face Meeting	Meetings can be held at the faculty building during the office hours specified at the faculty members' doors.
Academic Staff Information	You can access the CVs and contact information of academic staff at the following address: https://aif.neu.edu.tr

Student participation in class and excuses

Students are required to attend classes, practicals, and exams. To be eligible for the final exams, students must successfully attend 70% of the theoretical courses and 80% of the practicals and/or other learning activities. Student attendance is monitored by the relevant instructor. Students on sick leave during the semester are considered absent from classes held during the sick leave period. Therefore, sick leave is not accepted as an excuse for absence.

Student Affairs

The Student Affairs Registration and Admissions and Student Accounting Units are responsible for maintaining student records from initial registration to graduation, informing students about payment procedures, guiding students within the framework of relevant regulations, and managing student documentation processes.

The Student Affairs Registration and Admissions Unit handles registration and admission procedures (pre-registration, final registration, course registration, etc.), student documentation procedures (student certificate, transcript, etc.), transfer procedures, immigration procedures, military service deferment, registration cancellation/dismissal, academic leave procedures, student ID card applications, student petition acceptance, YÖKSİS (e-Government) procedures for Turkish nationals, TRNC-YÖKAS (higher education registration system), student information system updates, official student affairs correspondence, student announcements, and graduation procedures (Graduation Certificate/Diploma/Graduate Transcript, etc.).

Our Student Affairs Accounting Unit handles: Student fee investment transactions (tuition fees, social activity, internship, stamp, transcript fees, etc.), payment method options (cash or installment), determination of student status (active, passive student, etc.), semester registration transactions, master's and doctoral course approval, visa/final/make-up exam entrance document approval, and evaluation of accounting petitions are carried out.

Student Affairs Office Hours:

Monday-Friday 8:00 AM - 5:00 PM.

Closed on public holidays.

Student Affairs Office Contact Information:

Faculty of Pharmacy 1st floor

For Turkish Students

Student Affairs Chief: Emine Kılıçoğulları

Phone: 0392 223 6464 / Extension 5217 and 5377

E-mail: eminebasarhan.kilicogullari@neu.edu.tr

For International Students

Office Manager: Beliz Özdiren

E-mail: beliz.ozdiren@neu.edu.tr

Campus Life

Library

Located directly across from the Faculty of Economics and Administrative Sciences, the Grand Library boasts 1,000,000 open shelves, over 150,000,000 e-journals, 7,000 DVDs, 17 movie booths, 12 individual and group study rooms, four 1,000-seat lecture halls, a 350-seat theater, a 600-seat cafeteria, and 600 study desks. It is a world-class cultural and information center. The Grand Library is open 24/7 and free of charge. Equipped with the latest digital technology, the Information Center is accessible from anywhere via the internet. Access to any information is possible via the wireless computer network throughout the campus.

Social Activities and Clubs

During their studies, students can also attend conferences organized by the school from time to time and engage in social interaction by participating in club activities. Some of the clubs active within the school include the Law Club, Nature and Sports Club, Scientific Research and Health Club, Theater Club, Photography Club, and Tango Club. Detailed information about the clubs can be found at <https://neu.edu.tr/kampusteyasam/sosyal-ve-kulturel-kulupler/>. Students can also visit the school website for information about frequently held conferences.

The university also boasts an Olympic-sized indoor swimming pool. It covers an area of 2,700 square meters, is 16 meters high, measures 50 x 21 meters, holds 3,100 tons of water, has a central heating system, can accommodate 1,000 spectators, has 3, 5, 7, and 10-meter diving towers, and is equipped with modern interior equipment. With these features, it is the country's first and only Olympic-sized indoor swimming pool. Since its opening, swimming courses have been offered in both summer and winter. For hours and detailed information, you can visit <https://neu.edu.tr/kampusteyasam/olimpik-kapali-yuzme-havuzu/>

Psychological Counseling Service

The university has been offering free psychological counseling to students since 1995. The Counseling Center is located on the first floor of the Faculty of Law building. The center operates by appointment only and is open every weekday from 9:00 am to 1:00 pm and from 2:00 pm to 4:00 pm.

Dean of Students

The Dean of Students Office aims to create the environment necessary for a productive, active, and high-quality university life where our students and alumni integrate with the university, feel the university's support in every aspect of their personal, cultural, social, and professional development, find solutions to all their problems, and experience the joy and pride of being from

the Near East. The Dean of Students Office is an integral part of Near East University's academic life. It provides services, programs, and various opportunities to support our students in vocational training, preparing them for life, contributing to their knowledge and credentials, and instilling a sense of confidence in the hands that will shape the future.

The Student Counseling and Communication Unit, the Psychological Counseling Unit, the Student Activities Unit, the Neuideas Unit, the Career Planning Unit, the Social Responsibility Projects Unit, the Disabled Students Unit, and the Alumni Unit are all units affiliated with the Dean of Students Office.

If you need support accessing classes due to a disability, please contact the Barrier-Free Support Unit. Contact: engelsiz@neu.edu.tr

Student Counseling and Communication Unit

When students occasionally encounter situations where they are unable to fulfill their academic obligations due to uncontrolled and unexpected reasons, they can share their problems and concerns regarding refunds, academic matters, job applications, dormitory matters, and financial matters through the online petition system, emailing them at petitions@neu.edu.tr, and we will help students resolve their problems.

Sports Opportunities

The rich variety of sports facilities on our university campus offer students, faculty, and all employees the opportunity to embrace and foster a healthy lifestyle. Our modern facilities, including an Olympic-sized swimming pool, tennis courts, a football field, a gym, and indoor and outdoor sports halls, provide an ideal environment for anyone wishing to participate in a variety of sports.

Our facility, which boasts the country's first and only Olympic-sized indoor swimming pool, has a capacity of 1,000 spectators, modern interior furnishings, and a cafeteria. Swimming courses are also offered, along with various sports activities such as water polo, pole vaulting, and water ballet.

The Sports Tower is a sports center equipped with the latest technology and expert instructors, catering to all age groups. We offer a wide range of sports, including fitness, step, aerobics, spinning, TRX, Kangoo Jumps, and Total Body, as well as group sessions and specialized dance training for Pilates, yoga, boxing, and karate. We also offer sports nutrition and dietitian services, as well as dedicated sections for children and women. The RA25 Sports Hall hosts events for

sports such as basketball, handball, volleyball, and badminton, and also hosts various ceremonies and concerts with its special sound system. You can find detailed information about sports activities on the website:

<https://neu.edu.tr/kampuste-yasam/spor/>

<https://neu.edu.tr/wp-content/uploads/2018/12/21/spor-kule-brosur-21.12.18.pdf>

Atatürk Culture and Congress Center (AKKM)

Prioritizing quality and efficiency in education, Near East University has brought the Atatürk Culture and Congress Center to our campus to achieve these goals. This modern center has been meticulously designed to host national and international congresses, seminars, meetings, conferences, and cultural events.

AKKM serves as a platform for not only students but also academics, experts, and the wider community. Meeting rooms of various sizes are equipped with modern audio and visual systems. Campus life, enriched by art exhibitions, concerts, theater performances, and other cultural events, allows students, staff, and the community to interact not only with academics but also with culture and the arts.

For detailed information, please visit the institution's website:

<https://neu.edu.tr/kampuste-yasam/ataturk-kultur-ve-kongre-merkezi/>

Restaurants and Cafeterias

The Near East University campus boasts numerous dining facilities designed to meet a variety of needs. These facilities, including the Central Cafeteria, Faculty Cafeteria, Hospital Cafeteria, and other units capable of serving 4,500 people simultaneously, offer high-quality and affordable food and beverage options to students, staff, and visitors. A total of 22 cafeterias, cafés, and restaurants on campus promote a healthy eating culture and offer a wide variety of dishes, including vegetarian and vegan options.

These services and units include:

Cafe Hastane 1, Cafe Hastane 2, Cafe Bigla, Cafe Dental, Cafe Ecza, Cafe Saray, Chicken House, Cafe Library, Cafe Bridge, Cafe Veterinerlik, Gusto Cafe, Cafe Sağlık, Vitamin Cafe, Cafe 535, Cafe AKKM, Book Cafe, Cafe Laundry, Hospital Restaurant, Kebap House, Pizza Pizza, The Kaffo, Bakery and Patisserie, and the 9th Floor Restaurant.

For more information, please visit our university websites:

Market & Süpermarket

İKAS Süpermarket

Located on campus, IKAS Supermarket offers a wide range of products and extended opening hours to meet all the needs of campus residents. There's also an IKAS supermarket branch located beneath the first dormitory building on campus to meet our students' needs.

Working Hours:

Weekdays/Weekends: 7:30-22:00

İKAS Süpermarket Express

IKAS Supermarket Express, located within the Near East Fuel Oil business on the Near East Campus, is open 24/7. The IKAS Supermarket discount offered to Near East Institution employees also applies to this market.

NEU Event Park Drift Zone

The Neu Event Park Drift Zone opens its doors to those who want to experience speed, control, and excitement all at once, promising an unforgettable driving experience. With two expert professional instructors in the field, you can not only learn to drift at Neu Event Park, but also improve your skills in safe and efficient driving techniques. Details such as tires and fuel are included in the training packages. The lesson lasts 30 minutes.

Neu Event Park offers four different training packages to meet different expectations. Moreover, there's a special opportunity for families who want to instill a passion for cars at a young age: with a specially designed manual car driving course for children ages 6-12, even the little ones can get behind the wheel!

Guests from abroad are offered the opportunity to quickly learn the basics of drifting with a three-lesson accelerated program.

All participants who successfully complete the training programs (excluding tourist guests and children's programs) receive a certificate of participation documenting this special experience.

The NEU Event Park Drift Zone also hosts special events such as birthdays and concerts.

Working Hours:

Weekdays 4:00 PM - 9:00 PM

Weekends 9:00 AM - 9:00 PM

Closing hours are flexible for special events or requests.

For more detailed information about packages and pricing:

Tel: 0548 821 21 24

Accessible Cinema Hall

The newly renovated "Accessible Cinema" hall at the Near East University Faculty of Communication offers a modern and accessible experience for film enthusiasts and event attendees. Launched in 1997 with the support of Telsim and undergoing a comprehensive renovation this year, the hall is now significantly more equipped and comfortable.

With a fixed seating capacity of 40, the Accessible Cinema stands out with its flexible structure, which can be expanded to 60 people if needed. Film screenings feature a state-of-the-art projector and ports compatible with all computers. The powerful speaker system enhances the audio experience.

A key feature of the hall is the accessibility ramp, which extends seamlessly from the exterior of the building to the seats, facilitating access for individuals with disabilities. This allows all moviegoers to enjoy an enjoyable experience without encountering any obstacles.

The Accessible Cinema also provides suitable physical conditions for mini-workshops and various events.

İKAS Patisserie & Bakery

A popular spot on the Near East University campus, İkas Patisserie & Bakery welcomes guests with its rich flavors and delightful atmosphere. With a total seating capacity of 40 people, the establishment offers a 20-person indoor area and a 20-person outdoor area, ensuring enjoyable moments both indoors and outdoors.

In addition to meeting Near East University's in-house cakes, pastries, pastries, desserts, and ice cream needs, İkas Patisserie & Bakery also offers fresh and delicious products to its guests. Upon completion of the kitchen expansion in the near future, the company will also begin producing its own bread. Additionally, for those who prioritize a healthy lifestyle, diet desserts and beverages designed for athletes, perfect for pre- and post-workout consumption, will be available for purchase.

Offering a wide selection of hot and cold beverages, İkas Patisserie & Bakery caters to all tastes and also accepts special cake orders for birthdays and other celebrations.

The establishment's garden is designed for year-round enjoyment. You can enjoy the garden under the cool shade in the summer and by the warm stove in the winter.

İkas Patisserie & Bakery, which also offers parking for its guests, welcomes those looking for a peaceful breakfast, especially on weekends. Enjoy a wonderful start to the day with its rich selection of classic and English breakfasts, served until noon on Saturdays and Sundays.

Working Hours:

Weekdays/Weekends: 7:00 AM - 1:00 AM

Photocopy Services

Photocopying and printing services are available at various locations for Near East University students and staff. Located throughout the campus, these centers aim to provide fast and reliable solutions to students' educational and academic needs.

Photocopy centers are available in faculties with high printing needs, particularly the Faculty of Architecture, the Faculty of Medicine, and the Faculty of Education. These centers offer services for special printing needs, such as large-format AutoCAD printouts for architecture students.

Thesis binding services, an essential service for students preparing their thesis, are also available. In addition to basic services such as photocopying and printing, document scanning and various binding options are also available. The Near East Library also has a stationery store where you can obtain photocopying and thesis binding services.

Cyprus Printing Global

Hospital Branch: 0546 990 01 03

Education Center Branch: 0546 990 01 04

Faculty of Architecture Branch: 0546 990 01 05

Nuroğlu Stationery (Library): 0533 866 89 36

Bank & ATM

Our campus houses branches of Near East Bank and Türkiye İş Bankası, as well as an ATM for Ziraat Bankası. These branches and ATMs are conveniently located on campus, allowing our employees and students to easily conduct their financial transactions.

Post Office

The Post Office provides postal services to Near East University students and all employees; it is located on campus so they can easily send and receive mail.

Location: Faculty of Economics and Administrative Sciences, Ground Floor

Yakın Doğu Gas Station

The gas station located on campus provides employees with a quick and easy way to meet their fuel needs. Furthermore, all Near East University employees can benefit from discounted fuel services with the Near East Fuel discount card.

You can find detailed information about Near East Fuel on the company's website:

<https://yakindoguakaryakit.com/>

Useful Phone Information

To find out more about the telephone information at Near East University and to find out the specific contact numbers for the department or service you need, you can access detailed information on the institution's website:

<https://neu.edu.tr/telefon-rehberi/>

Campus Traffic Rules and Safety

The Near East University campus is subject to established traffic regulations for the safety and comfort of our students, staff, and visitors. Traffic regulations are monitored 24/7 by NEU staff, and penalties are applied when necessary.

Full understanding and implementation of these rules will help us create a safer campus environment together.

Traffic Flow and Priority: Traffic flows on the left side of the NEU campus. Therefore, drivers must use the left lane and obey the yield rules to allow other drivers to proceed freely.

Pedestrian and Bicycle Priority Campus: Give priority to those walking or bicycling in crosswalks and bicycle paths. Ensure a safe environment for pedestrians and cyclists by reducing your speed and proceeding with caution in these areas.

Speed Limit: The maximum speed limit on campus is 40 km/h. Compliance with this limit significantly contributes to the prevention of accidents and overall safety.

Horns and Loud Sounds: Honking and listening to loud music are prohibited on campus. Compliance with these rules helps maintain the peace of mind of those around you.

Traffic Signs and Road Signs: Traffic signs and road signs are placed at numerous points throughout the campus to ensure a safe and orderly flow of traffic. Adherence to these signs is crucial to ensuring a safe traffic flow.

Routes and Parking Areas: Using designated routes on campus promotes safe driving on campus. Vehicles must be parked in designated areas and in accordance with the rules.

Inspection and Security: Traffic inspections are conducted regularly. Security personnel are present on campus to enforce traffic regulations. Please follow their instructions and seek assistance when necessary. Adhering to security measures helps ensure the smooth operation of campus transportation. Respecting these regulations by everyone will foster a more peaceful and safe working environment on campus.

Transportation Services

Near East University provides its employees with comfortable and free transportation, providing easy access to campus and surrounding areas. Our university transportation services include routes designed to suit employees' class and work schedules. Free university buses, operating from our campus to various locations and the city center, provide a wide transportation network. This service aims to reduce car use and encourage environmentally friendly and shared transportation. Free transportation services offer significant support in making employees' lives easier.

Campus-Nicosia, Nicosia-Campus Services: Our employees can travel safely and comfortably between campus and Nicosia with the Campus-Nicosia and Nicosia-Campus services, which operate between 6:45 AM and 10:15 PM. These services cover a wide range of routes. You can find detailed information about transportation services and routes on the institution's website: <https://bus.neu.edu.tr/>

Free Intercity Shuttles: Near East University offers free shuttle services for employees arriving from various locations, including Kyrenia, Famagusta, and Güzelyurt. These services are designed to provide employees with a comfortable and comfortable journey to campus.

On-Campus Shuttles: A complimentary shuttle service is available between the campus residences and faculty and other units. These shuttles provide employees with quick and easy access to the campus.

Easy Access within Walking Distance: The Near East University campus is designed to provide employees with safe access to many locations within walking distance. Distances between classrooms, the library, the cafeteria, and other key locations are designed to ensure users can reach their destinations quickly. The campus design has been carefully considered to encourage physical activity and minimize the need for motorized transportation. Furthermore, we provide employees with environmentally friendly travel options through various alternative transportation options, such as bicycles and electric scooters.

With these transportation options, Near East University provides its employees with easy access to activities and resources on campus. Near East University provides a safe transportation network across its extensive campuses, supporting employees in maintaining their professional and personal lives in the most productive way possible.

Near East University | Faculty of AI and Informatics
Department of Data Analytics Engineering | Student Information Brochure
2025–2026 Academic Year

☐ **WHO ARE YOU, WHERE ARE YOU?**

- Faculty Founding Year: 2024
- Goal: to educate highly qualified professionals and researchers who can develop, apply, and manage intelligent systems and digital technologies that address the challenges of the 21st century
- Total Programs: 8 undergraduate, 4MSc, 3 PhDs
- Languages of Instruction: Turkish and English
- Number of Students: 1000+

☐ **DATA ANALYTICS ENGINEERING DEPARTMENT**

- Department Head: Assoc. Prof. Dr. SEREN BAŞARAN

- Contact: seren.basaran@neu.edu.tr
- Degree Awarded: Bachelor of Science Degree in Data Analytics Engineering
- Total Credits: 240 ECTS
- Number of Technical Elective Courses: 4 + 16 restricted electives

✓ **GRADUATION REQUIREMENTS**

- Complete all courses with a minimum letter grade of DD/S
- GPA: Minimum 2.00 / 4.00
- 70% course attendance required
- Requirement to take 4 technical elective courses in addition to 16 restricted electives

☐ **REGISTRATION AND ADVISORSHIP**

1. Pay your tuition
2. Register for courses via register.neu.edu.tr
3. Obtain advisor approval
4. Make adjustments during the "add/drop" week, if necessary

☐ **CONTACT**

- Dean Office: +Phone: +90 (392) 223 64 64

☐ **MORE INFORMATION**

- Faculty Web: <https://aif.neu.edu.tr/>
- UZEBİM: <https://uzebim.neu.edu.tr>
- Academic calendar: <https://neu.edu.tr/academic/academic-calendar/?lang=en>

☐ **CAMPUS LIFE**

- ☐ Library: Open 24/7, 1 million books, 150 million digital resources
- 🍷🍷 Food & Beverage: 22 restaurants & cafes, vegan/vegetarian menus
- 🏊🏊 Sports: Olympic-sized pool, yoga, fitness, dietitian support
- 🗨️🗨️ Psychological Counseling: Free, by appointment pdram@neu.edu.tr

☐ **DONT FORGET!**

- Education at Near East University is not just academic; it's a journey integrated with social, cultural, and personal development. Let this brochure guide you in your first steps!