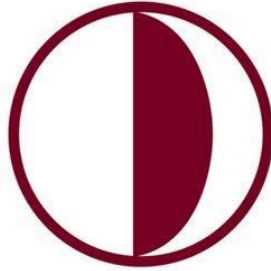


NEAR EAST UNIVERSITY



**FACULTY OF AI AND INFORMATICS
MANAGEMENT INFORMATION SYSTEMS**

STUDENT HANDBOOK

2025-2026 Academic Year

Contents

<i>Dean's Message.....</i>	<i>5</i>
<i>About Us.....</i>	<i>6</i>
<i>Faculty Organization Chart</i>	<i>7</i>
Why International Law Department?	8
Faculty Contact Information	8
Dean	8
Dean Assistant	8
<i>INTERNATIONAL LAW DEPARTMENT</i>	<i>8</i>
Head of Department's Message.....	8
Program Information.....	9
Degree Awarded.....	10
Admission Requirements	10
Graduation Requirements and Regulations	10
Recognition of Prior Learning	11
Program Details	11
Program Learning Outcomes.....	11
Program Structure.....	11
International Law Department 4-year Course Program.....	14
International Law Department Elective Courses List	15
Additional Information	16
Important Notes on Elective Courses	16
Exam Regulations, Evaluation and Grading.....	16
Graduation Requirements.....	18
<i>Academic Calendar 2025-2026.....</i>	<i>19</i>
<i>Registration and Admission Procedures</i>	<i>27</i>
<i>Course Registration.....</i>	<i>27</i>
Add/Drop and Withdrawal	27

Lateral and Vertical Transfers.....	27
Communication with Academic Staff	28
Class Attendance and Excused Absences.....	28
<i>International Student Office</i>	<i>28</i>
International Student Office Working Hours:	28
International Student Office Contact Information:	28
<i>Campus Life.....</i>	<i>29</i>
Library	29
Social Activities and Student Clubs.....	29
Psychological Counselling Services	29
Office of the Dean of Students	29
Student Counselling and Communication Unit	30
Sports Facilities	30
For more details:	30
Atatürk Culture and Congress Centre (AKKM).....	30
Restaurants and Cafeterias	30
Market & Supermarket.....	31
IKAS Supermarket.....	31
IKAS Supermarket Express	31
NEU Event Park Drift Area.....	31
Accessible Cinema Hall	32
IKAS Patisserie & Bakery.....	32
Photocopy Services	32
Bank & ATM	33
Post Office	33
Near East Fuel Station	33
Useful Phone Numbers	33
Campus Traffic Rules and Safety	33
<i>International Law Department / Student Information Handbook.....</i>	<i>36</i>
· Who ARE YOU? WHERE ARE YOU?	36

· INTERNATIONAL LAW DEPARTMENT	36
✓GRADUATION REQUIREMENTS.....	36
· REGISTRATION & ADMISSION PROCEDURES	36
1. 37	
2. 37	
3. 37	
4. 37	
· CONTACT	36
· MORE INFORMATION	36
· CAMPUS LIFE	36
· DO NOT FORGET!.....	36

Dean's Message

Dear Students;

Welcome to Near East University!

I am proud to serve as the Dean of AI and Informatics Faculty during this critical time of the rapidly developing artificial intelligence (AI) field in order to provide key opportunities for our university and our students.

The AI and informatics field create and implement designs to make human life easier. AI researchers now predict that computers will be able to perform tasks that were once considered the prerogative of human beings. They include tasks such as driving trucks, translating languages, writing high school essays, creating art, analyzing forensic evidence, and even work as a surgeon.

Near East University offers the opportunity to achieve this goal by providing high-level engineering education and the ability to adapt designs to the real world.

Departments in the Faculty of Artificial Intelligence and Informatics have certified their educational quality from accreditation organizations such as ABET, ASIIN and MÜDEK.

Our rise in world rankings is built on our reputation for delivering excellent education through faculty research, experiential learning, our growing alumni network and innovative design projects.

There are interesting developments happening every day inside and outside our innovation building on the Near East campus. The outside world will always demand more engineers, and experts in the field of AI and Informatics. We will continue to ensure that our graduates not only join this world, but also lead this field of innovative technologies.

I look forward to continuing to serve and strengthen this university while taking this journey of the great success. We hope you all join us and contribute to this success.

Prof. Dr. Fadi AL-TURJMAN

Dean of Faculty of AI and Informatics

About Us

The Faculty of Artificial Intelligence and Informatics at Near East University was established to meet the demands of the digital age and to provide a pioneering educational vision in next-generation technologies. Our faculty consists of nine departments: Information and Document Management, Information Systems Engineering, Cybersecurity Engineering, Software Engineering, Computer Informatics Systems, Data Analytics Engineering, Artificial Intelligence Engineering, Management Information Systems, and Computer Engineering.

With its multidisciplinary structure, the faculty integrates fundamental sciences with applied engineering, offering internationally recognised education to over 1,500 students.

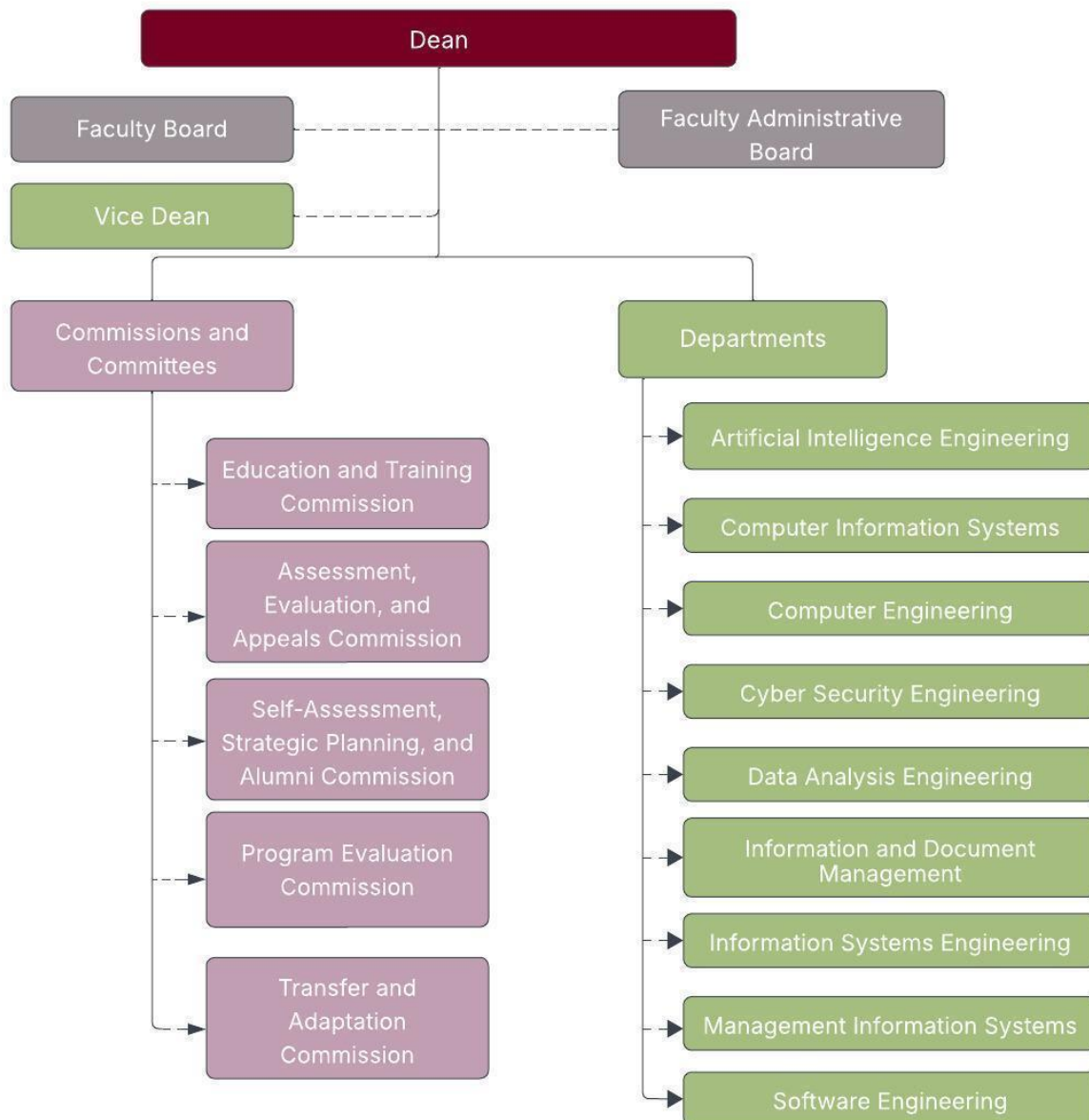
Supported by a strong academic staff and modern research infrastructure, Near East University has been a center of education, science, and culture since 1988. With world-class teaching and laboratory facilities, our university is committed to raising students who are innovative, creative, independent thinkers with a strong sense of responsibility.

With world-class laboratories and educational facilities, our university has an international identity and aims to educate students to be innovative, creative, free-thinking individuals with a strong sense of responsibility. In line with this vision:

- It maintains the title of “The best university in the TRNC” by ranking 601–800 in the **Times Higher Education (THE) World University Rankings**,
- It is ranked 689th in the world and 7th in Turkey on the **US News & World Report “Best Global Universities 2024–2025”** list,
- In the **THE Impact Rankings 2025**, which measure contributions to the United Nations Sustainable Development Goals, it has risen to 43rd place worldwide, and holds 13th place globally in the “Quality Education” category.

The Faculty of Artificial Intelligence and Informatics aims to educate competent, research-oriented graduates with global competitiveness, offering interdisciplinary programs that cover software engineering, cybersecurity, artificial intelligence, data analytics, and many other cutting-edge fields, while continuously strengthening its research capabilities and academic excellence.

Faculty Organization Chart



Why the Faculty of AI and Informatics?

Artificial intelligence and informatics are critical disciplines that shape not only today but also the future. In line with this vision, Near East University aims to become a centre of education, research, and societal contribution with regional and global influence through the Faculty of

Artificial Intelligence and Informatics, established in 2025. Our faculty is built not merely on the classical foundations of engineering, but on an innovative and visionary educational approach integrated with ethical values.

This faculty goes beyond traditional engineering schools based solely on mathematics and the natural sciences. It aims to train a new generation of professionals who combine comprehensive theoretical knowledge with practical skills in data science, informatics, and artificial intelligence. Our graduates will be dynamic, creative, and technology-oriented individuals ready to meet the needs of the rapidly changing global workforce.

By its very nature, artificial intelligence is interdisciplinary. Therefore, the establishment of our faculty will strengthen interaction among different academic fields within our university and create a unique environment for advanced research, innovation, and project development. Our faculty aims not only to graduate individuals who contribute to scientific projects, but also to cultivate leaders who will guide and shape these projects.

Faculty Contact Information

Dean

Prof. Dr. Fadi AL-TURJMAN

Near East University Faculty of Artificial Intelligence and Informatics

Yakın Doğu Boulevard, Postal Code: 99138 Nicosia / TRNC Mersin 10 – TURKEY

Tel: +90 (392) 223 64 64

Email: fadi.alturjman@neu.edu.tr

Dean Assistant

Sinem Alturjman

E-posta: yapayzekavebilisim.dekanlik@neu.edu.tr

MANAGEMENT INFORMATION SYSTEMS DEPARTMENT

Head of Department's Message

Dear Students,

Welcome to our Department of Management Information Systems, housed within the Faculty of Artificial Intelligence and Informatics. In today's world, where digital transformation and data-driven decision-making are of critical importance, we aim to equip you not only with technical knowledge but also with the skills to think analytically, plan strategically, and produce sustainable digital solutions.

Our department offers an interdisciplinary approach, blending business, informatics, artificial intelligence, and management. We offer applied courses based on current technologies, project-based learning methods, and industry-integrated activities to ensure our students have a strong position in the global business world after graduation.

The Near East University campus offers an inspiring learning environment with its technological infrastructure, rich library resources, R&D centers, social spaces, and green campus vision. Our university, which embraces sustainability as a way of life, aims to leave a livable world for future generations through environmentally friendly practices.

Contributing to the academic, social, and personal development of our valued students is our top priority. We are happy to support you in every way throughout your education. I wish you a successful university life.

Warm regards,

Prof. Dr. Fezile Özdamlı
Head of the Department
Department of Management Information Systems
Near East University

Contact:

Prof. Dr. Fezile Özdamlı

Phone: +90 (392) 675 10 00/3125

E-mail: fezile.ozdamli@neu.edu.tr

Program Information

Near East University, Department of Management Information Systems (MIS) was founded to meet the increasing demand for professionals who can effectively integrate information technologies with business management. The vision of the department is to become a leading and well-respected centre in education and research in the field of management information systems.

Strengthened with a modern and interdisciplinary curriculum, a comprehensive library, advanced research laboratories, and innovative learning resources, the department provides students with the knowledge and skills required to design, manage, and improve information systems in today's data-driven world. With a young and dynamic academic staff, the department aims to equip

students with both theoretical foundations and practical competencies, enabling them to contribute to businesses, society, and scientific development.

The language of instruction is English, allowing students to access international knowledge and develop global competencies in both management and information technologies.

Degree Awarded

Students who complete the program are awarded a Bachelor's Degree in Management Information Systems. The program corresponds to Level 6 of the Turkish Higher Education Qualifications Framework (TYYÇ), Level 6 of the European Qualifications Framework for Lifelong Learning (EQF-LLL), and the First Cycle of the Qualifications Framework in the European Higher Education Area (QF-EHEA). Graduates are entitled to hold the title of **“Bachelor's Degree in Management Information Systems.”**

Admission Requirements

International students are admitted to this undergraduate program based on their scores from international examinations such as **SAT, ACT**, or equivalent, or according to their high school diploma grades.

The admission of exchange students is carried out in accordance with the conditions specified in the **bilateral agreements** signed between Near East University and its partner institutions.

Graduation Requirements and Regulations

In order to graduate from this undergraduate program, students must have a Cumulative Grade Point Average (CGPA) of at least 2.00 out of 4.00 and successfully complete all courses in the program with a minimum letter grade of DD/S. The minimum number of ECTS credits required for graduation is 240.

ECTS is a credit system designed to make it easier for students to move between different countries. Since they are based on the learning achievements and workload of a course, a student can transfer their ECTS credits from one university to another, so they are added up to contribute to an individual's degree programme or training. ECTS helps to make learning more student-centred. It is a central tool in the [Bologna Process](#), which aims to make national systems more compatible.

ECTS also helps with the planning, delivery and evaluation of study programmes, and makes them more transparent (http://ec.europa.eu/education/ects/ects_en.htm).

Recognition of Prior Learning

At Near East University, full-time students may be exempted from certain courses in accordance with the relevant regulations. If a course previously completed at another higher education institution is deemed equivalent in content to a course offered at NEU, the student may be

granted exemption upon evaluation of the course content and approval by the relevant faculty or institute.

Program Details

The main objective of the Management Information Systems (MIS) Program is to educate individuals who can integrate business management with information technologies, manage digital transformation processes, and effectively utilize technology-supported decision-making mechanisms.

The program equips students with both theoretical knowledge and practical skills, preparing them for the IT-driven structure of the business world. It offers interdisciplinary education in fields such as business, management, software, data analytics, and information systems.

Throughout the program, courses are updated with content that keeps pace with technological developments. Students are expected to develop core competencies such as problem-solving, analytical thinking, project management, and system design. With English-supported content, students also strengthen their international collaboration and communication skills.

The MIS Program aims to produce graduates who are innovative, capable of critical thinking, ethically conscious, sensitive to sustainable development goals, and able to lead technology-driven initiatives.

Program Learning Outcomes (PLOs) and TQF-HETR Alignment

Field: Business and Administration (34)

TQF-HETR Level 6 (EQF-LLL 6, QF-EHEA First Cycle)

Program Learning Outcome (PLO)	Related TQF-HETR Item
PLO1. Applies current theoretical and practical knowledge in the field of Management Information Systems; evaluates them in solving business and management problems.	TQF-HETR Level 6 – Knowledge 1
PLO2. Analyzes the integrated structure of business, management, and informatics disciplines and applies them in decision-making processes.	TQF-HETR Level 6 – Knowledge 2
PLO3. Analyzes complex business and informatics problems, develops and implements solution proposals, and evaluates results.	TQF-HETR Level 6 – Cognitive Skills 1
PLO4. Effectively applies information systems, AI software, and data analysis tools; produces appropriate solutions for business problems.	TQF-HETR Level 6 – Practical Skills 2
PLO5. Takes responsibility individually or as part of a team; carries out project management and coordination processes.	TQF-HETR Level 6 – Competence to Work Independently and Take Responsibility 1
PLO6. Continuously develops knowledge and skills with lifelong learning awareness; adapts to new technologies.	TQF-HETR Level 6 – Learning Competence 1

Program Learning Outcome (PLO)	Related TQF-HETR Item
PLO7. Works in line with principles of ethics, digital responsibility, and effective communication; collaborates with different disciplines.	TQF-HETR Level 6 – Communication and Social Competence 1-2
PLO8. Develops awareness of sustainability, entrepreneurship, and innovation; produces responsible digital solutions.	TQF-HETR Level 6 – Communication and Social Competence 3
PLO9. Acts in accordance with ethical principles, information ethics, and social responsibility in business life; applies ethical evaluation in decision-making.	TQF-HETR Level 6 – Field-Specific Competence 1
PLO10. Develops innovative and entrepreneurial approaches in Management Information Systems practices; improves business processes.	TQF-HETR Level 6 – Field-Specific Competence 2

Program Structure

The Management Information Systems (MIS) Undergraduate Program is a four-year program comprising a total of 240 ECTS credits and 47 courses. The medium of instruction is English-supported, and the course content is aligned with current technological developments.

Each semester includes a minimum of five courses, consisting of both compulsory and elective courses. The program incorporates core compulsory courses determined by the Higher Education Council (YÖK) as well as general courses specified by the Senate of Near East University. From the fourth semester onwards, students are offered elective courses that allow them to specialize in various fields. Within the program, students are required to take at least 12 elective courses.

The courses cover fundamental areas such as management, information systems, programming, system analysis, data management, and digital business models. The full four-year course schedule and the list of elective courses are provided below.

Management Information Systems Department 4-year Course Program

1 st Semester								2 nd Semester							
CODE	COURSE NAME	DERS ADI	C/E	T	P	C	E	CODE	COURSE NAME	DERS ADI	C/E	T	P	C	E
ENG101	ENGLISH I	İNGİLİZCE I	C	3	0	2	3	ENG102	ENGLISH II	İNGİLİZCE II	C	3	0	2	3
MTH171	MATHEMATICS FOR BUSINESS AND	İŞLETME VE EKONOMİ İÇİN MATEMATİK	C	3	0	3	6	MTH172	MATHEMATICS FOR BUSINESS	İŞLETME VE EKONOMİ İÇİN MA	C	3	0	3	6
EAS101	PRINCIPLES OF ECONOMICS I	İKTİSATA GİRİŞ I	C	3	0	3	7	EAS102	PRINCIPLES OF ECONOMICS II	İKTİSATA GİRİŞ II	C	3	0	3	7
EAS103	INTRODUCTION TO BUSINESS	İŞLETMEYE GİRİŞ	C	3	0	3	6	EAS104	PRINCIPLES OF MANAGEMENT	İŞLETME YÖNETİMİ	C	3	0	3	6
MIS101	INTRO. TO INFORMATION TECHNO	BİLİŞİM TEKNOLOJİLERİNE GİRİŞ I	C	3	0	3	4	MIS132	ALGORITHMS AND PROGRAM	ALGORİTMA VE PROGRAMLAMA TEKNİKLERİ	C	3	0	3	
YIT101/TU	TURKISH FOR INTERNATIONAL STU	YABANCILAR İÇİN TÜRKÇE I	C	2	0	2	2	YIT102/TUR102	TURKISH II (FOREIGN STDS) TURKISH II (TURKISH STDS)	YABANCILAR İÇİN TÜRKÇE II TÜRKÇE II	C	2	0	2	2
CAM100	CAMPUS ORIENTATION	KAMPUS UYUM	C	2	0	0	2	GEC351	21 st CENTURY SKILLS	21. YÜZYIL BECERİLERİ	C	2	0	0	2
Total				19	0	16	30	Total				19	0	16	30
3 rd Semester								4 th Semester							
CODE	COURSE NAME	DERS ADI	C/E	T	P	C	E	CODE	COURSE NAME	DERS ADI	C/E	T	P	C	E
MAN201	COMMUNICATION FOR BUSINESS	İŞLETMELERDE ETKİLİ İLETİŞİM I	C	3	0	3	4	MIS246	DATABASE MANAGEMENT	VERİTABANI YÖNETİMİ	C	3	0	3	6
MIS210	INTRODUCTION TO MIS I	YBS'YE GİRİŞ	C	3	0	3	6	MIS223	MANAGEMENT INFORMATION SYSTEMS II	YÖNETİM BİLİŞİM SİSTEMLERİ	C	2	2	3	6
MTH261	STATISTICS I	İSTATİSTİK I	C	3	0	3	6	MTH262	STATISTIC II	İSTATİSTİK II	C	3	0	3	6
MIS202	FUNDEMENTALS OF PROGRAMMI	PROGRAMLAMANIN TEMELLERİ	C	2	2	3	4	Elective	ELECTIVE	SEÇMELİ	C	2	0	3	4
EAS203	FINANCIAL ACCOUNTING I	FINANSAL MUHASEBE I	C	3	0	3	6	MIS202	NEW TRENDS IN BUSINESS IT	İŞ DÜNYASINDAKİ YENİ TREND	C	2	0	3	4
AIT103/ AIT103	PRINCIPLES OF ATATURK AND HIS	YABANCILAR İÇİN ATATÜRK İLKELERİ	C	2	0	2	2	AIT104/ AIT104	PRINCIPLES OF ATATURK AND	YABANCILAR İÇİN ATATÜRK İ	C	2	0	2	2
CHC100	CYPRUS HISTORY AND CULTURE	KIBRIS KÜLTÜRÜ VE TARİHİ	C	2	0	0	2	CAR100	CAREER PLANNING	KARIYER PLANLAMA	C	0	0	0	2
Total				15	2	17	30	Total				14	0	17	30
5 th Semester								6 th Semester							
CODE	COURSE NAME	DERS ADI	C/E	T	P	C	E	CODE	COURSE NAME	DERS ADI	C/E	T	P	C	E
Elective	ELECTIVE	SEÇMELİ	C	2	0	3	6	MIS321	E-BUSINESS SYSTEMS	E-TİCARET SİSTEMLERİ	C	3	0	3	6
MIS320	DATA SCIENCE	VERİ BİLİMİ	C	2	2	3	6	EAS308	OPERATIONS RES& MAN	YÖNEYLEM ARASTIRMASI VE Y	C	2	2	3	6
Elective	ELECTIVE	SEÇMELİ	C	3	0	3	6	Elective	ELECTIVE	SEÇMELİ	C	2	0	3	6
Elective	ELECTIVE	SEÇMELİ	C	3	0	3	6	Elective	ELECTIVE	SEÇMELİ	C	2	2	3	6
MIS322	SYSTEM ANALYSIS AND DESIGN	SİSTEM ANALİZ VE TASARIMI	C	2	2	3	6	Elective	ELECTIVE	SEÇMELİ	C	2	2	3	6
Total				13	4	15	30	Total				12	6	15	30
7 th Semester								8 th Semester							
CODE	COURSE NAME	DERS ADI	C/E	T	P	C	E	CODE	COURSE NAME	DERS ADI	C/E	T	P	C	E
MIS403	PROJECT I	PROJE I	C	3	0	3	6	MIS400	PROJECT II	PROJE II	C	3	0	3	6
MIS435	E-LEARNING SYSTEMS	E-ÖĞRENME SİSTEMLERİ	C	3	0	3	4	MIS410	DECISION SUPPORT SYSTEMS	KARAR DESTEK SİSTEMLERİ	E	2	2	3	6
Elective	ELECTIVE	SEÇMELİ	C	3	0	3	6	MIS420	ENTERPRISE RESOURCE PLANNING SYSTEMS	KURUMSAL KAYNAK PLANLAMA SİSTEMLERİ	E	2	2	3	6
Elective	ELECTIVE	SEÇMELİ	E	2	2	3	6	Elective	ELECTIVE	SEÇMELİ	E	2	2	3	6
Elective	ELECTIVE	SEÇMELİ	E	2	2	3	6	Elective	ELECTIVE	SEÇMELİ	E	2	2	3	6
	INTERNSHIP		C	0	2	0	2								
Total				13	4	15	30	Total				12	6	15	30

MIS Department Elective Courses List

CODE	COURSE NAME	T	P	C	E
MIS242	ANIMATION TECHNOLOGIES	2	2	3	4
MIS416	COMPUTER NETWORKS	2	2	3	4
CIS420	INFORMATION SYSTEMS SECURITY	2	2	3	4
MIS430	INFORMATION SYSTEMS FOR COMMUNICATION	2	2	3	4
MIS312	INFORMATIONS SYSTEMS SECURITY	2	2	3	6
MIS436	WEB TECHNOLOGIES	2	2	3	6
MIS450	IT PROJECT MANAGEMENT	2	2	3	4
MIS460	MOBILE APPLICATION DEVELOPMENT	2	2	3	4
CIS486	DATABASE PROGRAMMING II	2	2	3	4
MIS488	WEB DEVELOPMENT	2	2	3	4
MIS401	E-GOVERNMENT	2	2	3	4
MIS412	CRYPTOGRAPHY AND CODING THEORY	2	2	3	4
MIS414	MULTIMEDIA SYSTEMS	2	2	3	4
MIS490	IT AND SUSTAINABILITY	2	2	3	6
MIS418	TELECOMMUNICATION IN BUSINESSES	2	2	3	4
MIS419	INTRODUCTION TO ARTIFICIAL INTELLIGENCE	2	2	3	4
MIS485	INFOGRAPHIC DESIGN	2	2	3	6
MIS436	SOCIAL MEDIA MANAGEMENT	2	2	3	6
MIS207	INTRODUCTION TO INFORMATION RETRIEVAL	2	2	3	6
MIS401	SUSTAINABLE FINANCE AND INVESTMENT	2	2	3	6
MIS442	ETHICAL AND SOCIAL ISSUES IN IS	2	2	3	4
MIS368	PROGRAMMING LANGUAGE III	2	2	3	4
MIS491	DIGITAL TRANSFORMATION FOR SUSTAINABLE BUSINESS	2	2	3	4
MIS313	PROGRAMMING LANGUAGE II	2	2	3	6
MIS325	DATABASE PROGRAMMING I	2	2	3	6
EAS204	FINANCIAL ACCOUNTING II	2	2	3	6
EAS403	MARKETING RESEARCH	2	2	3	6
EAS402	HUMAN RESOURCE MANAGEMENT	2	2	3	6

MAN454	INTERPERSONAL RELATIONSHIPS IN WORKING LIFE	2	2	3	6
MAN473	LEADERSHIP	2	2	3	6
GEC	SUSTAINABLE DEVELOPMENT AND EDUCATION	2	2	2	3
BANK405	RISK MANAGEMENT	2	2	3	6
EAS310	ÖRGÜTSEL DAVRANIŞ	3	0	3	6
EAS305A	PAZARLAMA İLKELERİ	3	0	3	6
EAS305B	PAZARLAMA İLKELERİ	3	0	3	6
EAS402	İNSAN KAYNAKLARI YÖNETİMİ	3	0	3	6
HRM428	İŞE ALIM VE YETENEK YÖNETİMİ	3	0	3	6
MAN425	BİLGİ YÖNETİMİ	3	0	3	6
MAN473	LİDERLİK	3	0	3	6
MAN490	KURUMSAL SOSYAL SORUMLULUK	3	0	3	6

Additional Information

To graduate, students must successfully complete courses totalling 240 ECTS credits. Students are required to fulfil both compulsory and technical elective course requirements to meet the 240 ECTS graduation threshold. Otherwise, they will not be considered eligible for graduation.

A minimum attendance rate of 70% is mandatory in all courses across our programs. Students who fail to meet this requirement receive an NA (Never Attended) grade for the relevant course. This grade is given to those who do not satisfy the attendance condition and lose the right to participate in end-of-term evaluations. The NA grade is not included in the GPA calculation.

In future semesters, students must still fulfil the 70% attendance requirement for the same course. However, in the case of a course repeated due to an FF (Failing Grade), the 70% attendance requirement is not enforced.

Important Notes on Elective Courses

Students enrolled in MIS program are required to complete at least 12 elective courses to graduate. These courses must be selected from the approved list of electives provided within the program. Courses that are not included in this list will not be recognized as electives. The ECTS credit value of each elective course must be equal to or greater than the credit values specified in the curriculum.

Exam Regulations, Evaluation and Grading

At our university, student performance is generally assessed through in-person examinations, including a midterm exam and a final exam. However, in some courses, alternative assessment

methods—such as project assignments, presentations, homework, quizzes, and group work—are also employed to encourage active participation and evaluate a range of skills.

The method of assessment for each course may vary depending on the nature of the course and the instructor's approach. Assessment criteria are communicated to students at the beginning of the semester and are clearly outlined in the course syllabus.

The final course grade is calculated based on the weighted average of all evaluations conducted throughout the term, including exams, assignments, and any additional components. Therefore, students are expected to actively engage not only in exams but in all forms of assessment during the semester. At Near East University, students receive one of the letter grades described below for each course, based on the assessment conducted by the course instructor. Each letter grade corresponds to a specific ECTS credit weight.

NOT	HARF NOTU	KATSAYI	AKTS NOTU
90-100	AA	4.0	A
85-89	BA	3.5	B*
80-84	BB	3.0	B*
75-79	CB	2.5	C*
70-74	CC	2.0	C*
60-69	DC	1.5	D
50-59	DD	1.0	E
49-00	FF	0.0	F

To be considered successful in a course: Students in **Level 6 (Bachelor's)** programs must receive at least a **DD**, For non-credit courses not included in GPA calculations, students must receive an **S (Satisfactory)** grade.

In addition to local letter grades, each grade has an **ECTS equivalent**, which facilitates student mobility between institutions. The grading table above is used for all courses offered by Near East University.

Besides standard letter grades, the following special grades may also appear on student transcripts:

Grade Meaning

I	Incomplete
S	Satisfactory
U	Unsatisfactory
P	Successful Progress
NP	Not Successful Progress
EX	Exempt
NI	Not Included

Grade Meaning

W Withdrawal

NA Never Attended

I (Incomplete): Assigned to students who fail to complete course requirements due to a valid reason approved by the instructor. Students must fulfil all outstanding obligations within one week after the official grade submission deadline. In exceptional cases, the deadline may be extended up to two weeks before the start of the next semester by the relevant academic board. Failure to meet the requirements within the given timeframe results in an automatic **FF** or **U** grade.

S (Satisfactory): Given to students who successfully complete non-credit courses.

U (Unsatisfactory): Given to students who fail non-credit courses.

P (Successful Progress): Assigned to students in courses with multi-semester requirements, where GPA is not calculated, and progress during the term is deemed satisfactory.

NP (Not Successful Progress): Assigned when expected progress is not achieved in multi-term courses that do not count toward GPA.

EX (Exempt): Given to students exempt from a specific course in the curriculum.

NI (Not Included): Indicates a course that is listed on the transcript but not included in the GPA calculation or official program requirements.

W (Withdrawal): Assigned when a student withdraws from a course between the 3rd and 10th week of the semester with approval from both their academic advisor and course instructor. Withdrawals are not allowed during the first two semesters. A student may withdraw from a maximum of **two courses** in associate programs and **four courses** in bachelor's programs. Courses with a prior **W** grade that did not affect the GPA cannot be withdrawn from again. The student must retake the course in the first term it is offered again.

NA (Never Attended): Given to students who fail to meet the minimum attendance requirement and lose the right to participate in final assessments. This grade is not included in the GPA.

On all student transcripts, both national letter grades and their corresponding ECTS equivalents are shown.

Graduation Requirements

To graduate from this undergraduate program, students must meet the following requirements;

Complete all courses in the curriculum with at least 240 ECTS credits and a minimum grade of DD/S and have a Cumulative Grade Point Average (CGPA) of at least 2.00 out of 4.00.

Academic Calendar 2025-2026

	FALL TERM
July 01, 2025; Tuesday	Intern Rotations Commence for Year 6: Faculty of Medicine
September 08, 2025; Monday	Last Day for the 1st Payment of the Fees (Full Payments and 1st Instalment)
September 08, 2025; Monday	Classes Commence for Years 2, 3, 4 and 5: Faculty of Medicine
September 08-12, 2025; Monday-Friday	Courses to be assigned to the Academic Staff
September 11-15, 2025; Thursday Monday	Activation of the Courses
September 08, 2025; Monday	Classes Commence for Years 1 and 2: Faculty of Medicine
September 15, 2025; Monday	English, Arabic and Turkish Proficiency Exams for Undergraduate Students
September 15-19, 2025; Monday-Friday	Course Registration
September 18, 2025; Thursday	English Language Proficiency Exam for Postgraduate Students
September 19, 2025; Friday	Last Day for Postgraduate thesis juries
September 22, 2025; Monday	Classes Commence (including the Preparatory Schools)

	FALL TERM
September 30, 2025; Tuesday	Exemption Exam for Common Courses (Courses in English)
October 02, 2025; Thursday	Exemption Exam for Common Courses (Courses in Turkish)
October 08, 2025; Wednesday	Last Day for the Payment of the 2nd Instalment of the Fees (for 8 Instalments)
October 08, 2025; Wednesday	Last Day for Changing the “I” (Incomplete) Grades for the Previous Term
October 10, 2025; Friday	Last Day for International Students to Withdraw
October 10, 2025; Friday	Last Day for Add/Drop
October 24, 2025; Friday	Last Day for Late Registration
October 29, 2025; Wednesday	Public Holiday
November 07, 2025; Friday	Last Day for Add/Drop for New International Students
November 08, 2025; Saturday	Last Day for the Payment of the 3rd Instalment of the Fees (for 8 Instalments)
November 08-14, 2025; Saturday Friday	Mid-term Exams
November 15, 2025; Saturday	Public Holiday

	FALL TERM
November 17-21, 2025; Monday- Friday	English Preparatory School Module 1 Final Exams
December 08, 2025; Monday	Last Day for the Payment of the 4th Instalment of the Fees (for 8 Instalments)
December 08, 2025; Monday	Identification of Courses for the Following Academic Term and Commencement of the Work on the Timetable
December 19, 2025; Friday	Last Day for Withdrawal
December 23, 2025; Tuesday	Last Day for Entry of NA Grades into the System
December 25, 2025; Thursday	Administrative Holiday for Students
December 30, 2025; Tuesday	Last Day of Classes
January 01, 2026; Thursday	Public Holiday
January 02, 2026; Friday	Administrative Holiday for Students
January 05-14, 2026; Monday Wednesday	Final Exams
January 08, 2026; Thursday	Last Day for the Payment of the 2nd Instalment of the Fees (for 2 Instalments)
January 08, 2026; Thursday	Last Day for the Payment of the 5th Instalment of the Fees (for 8 Instalments)

	FALL TERM
January 12-18, 2026; Monday-Sunday	Semester break for Year 4: Faculty of Medicine
January 17, 2026; Saturday	Last Day for the Grade Submission
January 19-23, 2026; Monday-Friday	English Preparatory School Module 2 Final Exams
January 20-21, 2026; Tuesday Wednesday	Graduation Ceremonies
January 26-08 February 2026; Monday-Sunday	Semester break for Years 1, 2 and 3: Faculty of Medicine
February 02-08, 2026; Monday-Sunday	Semester break for Year 5: Faculty of Medicine
	SPRING TERM
January 29-30, 2026; Thursday-Friday	Courses to be assigned to the Academic Staff
February 02-03, 2026; Monday-Tuesday	Activation of the Courses
February 02-06, 2026; Monday-Friday	Diploma Distribution
February 04-06, 2026; Wednesday-Friday	Course Registration
February 05, 2026; Thursday	First English Language Proficiency Exam of the Semester for Postgraduate Students

	FALL TERM
February 06, 2026; Friday	Last Day for Postgraduate thesis juries
February 06, 2026; Friday	English, Arabic and Turkish Proficiency Exams for Undergraduate Students
February 08, 2026; Sunday	Last Day for the Payment of the 6th Instalment of the Fees (for 8 Instalments)
February 09, 2026; Monday	Classes Commence (including the Preparatory Schools)
February 16, 2026; Monday	Exemption Exams for Common Courses (Courses in English)
February 17, 2026; Tuesday	Exemption Exams for Common Courses (Courses in Turkish)
February 26, 2026; Thursday	Last Day for Changing the “I” (Incomplete) Grades for the Previous Term
February 27, 2026; Friday	Last Day for International Students to Withdraw
February 27, 2026; Friday	Last Day for Add/Drop
March 06, 2026; Friday	Last Day for Late Registration
March 08, 2026; Sunday	Last Day for the Payment of the 7th Instalment of the Fees (for 8 Instalments)
March 19-22, 2026; Thursday- Sunday	Public Holiday
March 30, 2026; Monday	Last Day for Add/Drop for New International Students

	FALL TERM
April 06-April 11, 2026; Monday-Saturday	Mid-term Exams
April 06-April 10, 2026; Monday-Friday	English Preparatory School Module 3 Final Exams
April 08, 2026; Wednesday	Last Day for the Payment of the 8th Instalment of the Fees (for 8 Instalments)
April 23, 2026; Thursday	Public Holiday
May 01, 2026; Friday	Public Holiday
May 08, 2026; Friday	Last Day for Withdrawal
May 08, 2026; Friday	Identification of Courses for the Following Academic Term and Commencement of Work on the Timetable
May 19, 2026; Tuesday	Public Holiday
May 18, 2026; Monday	Last Day for Entry of NA Grades into the System
May 22, 2026; Friday	Last Day of Classes
May 22, 2026; Friday	Last day of Classes for the Faculty of Medicine; Years 1, 2 and 3
May 27-31, 2026; Wednesday-Sunday	Public Holiday
June 01- 10, 2026; Monday- Wednesday	Final Exams

	FALL TERM
June 05, 2026; Friday	Last day of Classes for the Faculty of Medicine: Years 4 and 5
June 11, 2026; Thursday	Final Exam for the Faculty of Medicine: Year 2
June 12, 2026; Friday	Final Exam for the Faculty of Medicine: Year 1
June 12, 2026; Friday	Final Exam for the Faculty of Medicine: Year 3
June 12, 2026; Friday	Last Day for the Grade Submission
June 12, 2026; Friday	Deadline for Summer School Applications
June 15, 2026; Monday	Applications for Re-sit Exams (Annual Programmes)
June 15-19, 2026; Monday-Friday	English Preparatory School Module 4 Final Exams
June 16-19, 2026; Tuesday-Friday	Re-sit Exams (Annual Programmes)
June 22, 2026; Monday	End of the Term (Last Day for the Submission of the Results of the Re-sit Exams)
June 22-26, 2026; Monday-Friday	Graduation Ceremonies

	SUMMER TERM
June 22-24, 2026; Monday-Wednesday	Courses to be assigned to the Academic Staff

	SUMMER TERM
June 22-24, 2026; Monday-Wednesday	Activation of the Courses
June 24, 2026; Wednesday	English Language Proficiency Exam for Postgraduate Students
June 24-26, 2026; Wednesday-Friday	Course Registration
June 26, 2026; Friday	Last Day for Postgraduate thesis juries
June 26, 2026; Friday	English Language Proficiency Exam for Undergraduate Students
June 29, 2026; Monday	Last day of Classes for the Faculty of Medicine: Year 6
June 29, 2026; Monday	Classes Commence (including the Preparatory Schools)
July 20, 2026; Monday	Public Holiday
August 01, 2026; Saturday	Public Holiday
August 07, 2026; Friday	Last Day of Classes (including the Preparatory Schools)
August 10-15, 2026; Monday-Saturday	Final Exams (including the Preparatory Schools)
August 17, 2026; Monday	Last Day for the Grade Submission
August 18, 2026; Tuesday	End of Term

	SUMMER TERM
August 24-28, 2026; Monday-Friday	Diploma Distribution

Registration and Admission Procedures

International Student Affairs is in the Faculty of Communication building and is open from Monday to Friday, between 08:00 and 17:00. Students can obtain information about faculties, complete registration procedures, and request documents such as exam entrance certificates, student certificates, and transcripts from the International Student Affairs Office.

Course Registration

Course registration is conducted online each semester. After completing the semester tuition payment, students can register for their courses via the online system at <http://oqrsis.neu.edu.tr>.

To access this system, each student is provided with a student ID number and a personal password by the faculty secretary. After selecting their courses through the system, students must also obtain approval from their academic advisors via the same platform.

The registration process is also outlined on the university's official website. However, students who have not paid their tuition fees or submitted their payment receipts to the Student Affairs Office will not be able to proceed with online registration. Final approval of course registration is completed by the academic advisors of the department.

Additionally, students may complete course registration by meeting in person with their academic advisors within their departments. During the registration period, as indicated in the academic calendar, students are expected to consult with their advisors for course selection and academic guidance.

Add/Drop and Withdrawal

Each semester, specific Add/Drop and Course Withdrawal dates are determined and announced in the academic calendar. During this period, students can attend their registered courses and, if they wish, make changes by adding or dropping courses. All course withdrawal, course change, or course addition procedures must be completed within the dates specified in the academic calendar. Students must consult with their academic advisors to carry out the requested changes.

Lateral and Vertical Transfers

Students who wish to apply for a lateral or vertical transfer must apply to the Student Affairs Office. After the application is approved, the student must provide an official transcript from their previous university to the department they have been admitted to. Before the student begins their education, the Department Head/Dean and the assigned academic advisor will evaluate whether the courses previously taken are equivalent to the courses in the current program.

For students who are citizens of the Republic of Türkiye, the rules regarding transfers to Near East University can be reviewed at the following links in accordance with the Council of Higher Education (YÖK) and university regulations:

<http://www.yok.gov.tr/4767>

<https://neu.edu.tr/wp-content/uploads/2023/05/29/YDU-Yatay-Gecis-Yonetmeligi-29.05.2023.pdf>

Communication with Academic Staff

Subject	Description
Course Materials and Content	All course materials, weekly content, and announcements are shared via the UZE BIM platform: https://uzebim.neu.edu.tr/
Email Communication	You can contact academic staff through their institutional email addresses .
Face-to-Face Meetings	You can meet with academic staff during their office hours , which are posted on their office doors in the faculty building.
Academic Staff Information	CVs and contact information of academic staff are available at: https://aif.neu.edu.tr/people/

Class Attendance and Excused Absences

Students are required to attend at least 70% of the total course hours for each course. If a student is unable to attend an exam, they must submit their medical report (issued by Near East University Hospital or a state hospital) within 3 working days following the exam date. Otherwise, the student will lose the right to take the make-up exam.

Students are responsible for following the make-up exam schedule through the university's announcements page or the instructor's personal page. If a student misses a previously announced make-up exam without valid excuse, they will lose the right to take that exam.

International Student Office

Near East University International Student Office provides support and counselling in the educational and social lives of foreign students studying at our university, from registration to graduation. International Student office ensure that international students who study at our

university return to their countries fully equipped with good memories and that more students from these countries apply to our university.

International Student Office Working Hours:

Monday to Friday 08:00 – 17:00.

Closed on official holidays.

International Student Office Contact Information:

Director of International Student Office: Asst. Prof. Dr. Rana Serdaroğlu

Phone: 0392 223 6464

E-Mail: rana.serdaroglu@neu.edu.tr

Campus Life

Library

Located directly across from the Faculty of Economics and Administrative Sciences building, the Grand Library features over 1,000,000 open-shelf books, 150 million electronic journals, 7,000 DVDs, 17 film viewing booths, 12 individual and group study rooms, 4 lecture halls with 1,000 seats, a theatre hall with a capacity of 350, a cafeteria for 600, and 600 study desks. This makes it a world-class cultural and information-access centre. The library is open 24/7 and is free of charge. The information centre, equipped with the latest digital technologies, is accessible from anywhere via the internet. Students can also access information throughout the campus via wireless internet.

Social Activities and Student Clubs

Students can participate in various activities throughout their studies, including university-sponsored conferences and club activities that encourage social engagement. Some active clubs include the Law Club, Nature and Sports Club, Scientific Research and Health Club, Theatre Club, Photography Club, and Tango Club. For more information, visit:

<https://neu.edu.tr/kampusteyasam/sosyal-ve-kulturel-kulupler/>

The campus also features the country's first and only Olympic Indoor Swimming Pool, covering 2,700 m², with a height of 16 meters, dimensions of 50 x 21 meters, 3,100 tons of water capacity, central heating, 1,000 spectator seats, and diving towers at 3, 5, 7, and 10 meters. Swimming courses are offered in both summer and winter.

<https://neu.edu.tr/kampusteyasam/olimpik-kapali-yuzme-havuzu/>

Psychological Counselling Services

Since 1995, the university has offered free psychological counselling. The Counselling Centre is located on the first floor of the Faculty of Law building. It operates by appointment and is open weekdays from 09:00–13:00 / 14:00–16:00.

Office of the Dean of Students

This office aims to provide an integrated university life where students and alumni feel supported in all aspects of their personal, cultural, social, and professional development. The Dean of Students offers various services and programs to support academic and personal growth, instilling a sense of confidence in students as they prepare for life beyond graduation.

Units under the Dean of Students include Student Counselling and Communication Unit, Psychological Counselling Unit, Student Activities Unit, NEU ideas Unit, Career Planning Unit, Social Responsibility Projects Unit, Students with Disabilities Unit, Alumni Affairs Unit. If you require support in accessing courses due to a disability, please contact the Accessible Support Unit: engelsiz@neu.edu.tr

Student Counselling and Communication Unit

In cases where students face unexpected or uncontrollable circumstances that affect their academic responsibilities, they can submit petitions through the online system or via email for issues such as refunds, academic matters, job applications, accommodation, or financial concerns: petitions@neu.edu.tr

Sports Facilities

The university offers a wide range of modern sports facilities to promote a healthy lifestyle among students, staff, and faculty. Facilities include an Olympic swimming pool, tennis courts, football fields, gymnastics halls, and both indoor and outdoor sports complexes.

Our Olympic Indoor Swimming Pool has a 1,000-seat capacity, modern amenities, and a café. Activities such as water polo, diving, and synchronized swimming, as well as swimming lessons, are regularly held. The Sports Tower is a high-tech fitness centre for all age groups, offering classes and sessions in: Fitness, Step, Aerobics, Spinning, TRX, Kangoo Jumps, Pilates, Yoga, Boxing, Karate, Dance education, Nutrition & diet services, with special sections for children and women. RA25 Sports Hall hosts competitions in basketball, handball, volleyball, and badminton, and functions as a venue for ceremonies and concerts with its advanced sound system.

For more details:

<https://neu.edu.tr/kampuste-yasam/spor/>

<https://neu.edu.tr/wp-content/uploads/2018/12/21/spor-kule-brosur-21.12.18.pdf>

Atatürk Culture and Congress Centre (AKKM)

This state-of-the-art venue hosts national and international congresses, seminars, conferences, and cultural events. It features various-sized meeting halls, modern audiovisual equipment, and spaces for art exhibitions, concerts, theatre performances, and more — enhancing campus life through arts and culture.

<https://neu.edu.tr/kampuste-yasam/ataturk-kultur-ve-kongre-merkezi/>

Restaurants and Cafeterias

The campus features a wide range of food and beverage outlets, including the Main Cafeteria, Faculty Cafeteria, Hospital Cafeteria, and others with a total service capacity of 4,500 people. Across campus, there are 22 cafes and restaurants offering healthy, affordable meals, with options for vegetarians and vegans.

Some of the dining facilities include:

Cafe Hastane 1 & 2, Cafe Bigla, Cafe Dental, Cafe Ecza, Cafe Saray, Chicken House, Cafe Library, Cafe Bridge, Cafe Veterinerlik, Gusto Cafe, Cafe Sağlık, Vitamin Cafe, Cafe 535, Cafe AKKM, Book Cafe, Cafe Laundry, Hospital Restaurant, Kebap House, Pizza Pizza, The Kaffo, Bakery & Patisserie, and the 9th Floor Restaurant.

For more information:

<https://neu.edu.tr/kampuste-yasam/kantin-ve-kafeteryalar/>

Market & Supermarket

IKAS Supermarket

Located on our campus, IKAS Supermarket serves campus residents with a wide range of products and extended working hours to meet all their daily needs. Additionally, there is a branch of IKAS Supermarket located under Dormitory Building 1, designed to serve students' essential needs.

Working Hours:

Weekdays/Weekends: 07:30 – 22:00

IKAS Supermarket Express

IKAS Supermarket Express, located within the Near East Campus at Near East Fuel Station, is open 24/7. Discounts available to Near East Group employees are also valid at this location.

NEU Event Park Drift Area

For those seeking speed, control, and excitement, NEU Event Park Drift Area offers an unforgettable driving experience. Under the supervision of two expert instructors, you will not only learn how to drift, but also improve your safe and effective driving techniques. Tire and fuel costs are included in the training packages. Each session lasts 30 minutes.

NEU Event Park offers 4 different training packages, tailored to various expectations. There is even a special course for young car enthusiasts: children aged 6–12 can participate in a manual driving course designed especially for them. For international visitors, accelerated 3-lesson programs are available to help them quickly learn the basics of drifting. Upon successful completion of the training program, a certificate of participation is awarded to all participants (excluding tourist guests and children's courses). The drift area can also host special events such as birthday parties and concerts.

Working Hours:

- Weekdays: 16:00 – 21:00
- Weekends: 09:00 – 21:00 Flexible closing hours are available for special events or upon request.

For detailed information about packages and pricing: Phone: +90 548 821 21 24

Accessible Cinema Hall

The newly renovated “Accessible Cinema” Hall at the Faculty of Communication, Near East University, offers a modern and inclusive experience for cinema enthusiasts and event participants. Originally launched in 1997 with the support of Telsim, the hall has recently undergone a comprehensive renovation and is now more equipped and comfortable than ever.

The Accessible Cinema features 40 fixed seats, with a flexible setup that can accommodate up to 60 people when needed. It is equipped with a state-of-the-art projection system compatible with all types of computers and has a powerful sound system to ensure an enhanced audio experience.

One of the hall's most significant features is its fully accessible ramp, which provides seamless access from the outside entrance to the seating area, allowing individuals with disabilities to enjoy events without barriers. In addition to film screenings, the Accessible Cinema is also physically suited for mini workshops and various events.

IKAS Patisserie & Bakery

One of the most popular spots on the Near East University campus, IKAS Patisserie & Bakery welcomes guests with a delightful atmosphere and a wide variety of delicious offerings. The venue has a total seating capacity of 40 people, including 20 indoor and 20 outdoor seats, allowing visitors to enjoy their time both inside and in the open air. In addition to meeting the university's in-house needs for cakes, pastries, savoury snacks, desserts, and ice cream, IKAS Patisserie & Bakery also serves fresh and tasty products to external guests. Soon, it plans to

expand its kitchen and begin producing its own bread. For those focused on healthy living, specially made diet desserts and drinks designed for pre- and post-workout consumption will also be available.

With an extensive menu of hot and cold beverages, the patisserie caters to all tastes and also takes custom orders for birthday cakes and special celebrations. The outdoor garden area has been designed to offer enjoyment all year round — cool shaded areas in summer, and warm cozy spots with stoves in winter. Parking is available for guests, and the venue especially welcomes those seeking a peaceful breakfast experience on weekends. On Saturdays and Sundays, rich classic and English breakfast options are served until noon — a perfect way to start your day!

Opening Hours: Weekdays / Weekends: 07:00 – 01:00

Photocopy Services

Near East University offers photocopying and printing services at various locations across campus for students and staff. These service centres aim to provide fast and reliable solutions for educational and academic needs. Photocopy centres are available in faculties with high printing demands, such as the Faculty of Architecture, Faculty of Medicine, and Faculty of Education. These centres offer specialized printing services, including large-format AutoCAD printouts for architecture students. Additionally, thesis binding services are available for students preparing their theses. Along with basic services like photocopying and printing, document scanning and various binding options are also provided. A stationery shop within the Near East University Library offers services such as photocopying and thesis binding.

Cyprus Printing Global

Hospital Branch: +90 546 990 01 03

Education Palace Branch: +90 546 990 01 04

Architecture Faculty Branch: +90 546 990 01 05

Nuroğlu Stationery (Library): +90 533 866 89 36

Bank & ATM

On campus, you will find branches of Near East Bank and Türkiye İş Bankası, as well as an ATM for Ziraat Bankası. These banking services are conveniently located to ensure that both students and staff can easily carry out their financial transactions.

Post Office

The Post Office at Near East University provides postal services to all students and staff. It is located on campus for easy access to both send and receive mail.

Location: Ground Floor, Faculty of Economics and Administrative Sciences

Near East Fuel Station

The on-campus fuel station provides university staff with a fast and convenient way to meet their fuel needs. In addition, all Near East University employees can benefit from discounted fuel services by using the Near East Fuel Discount Card. For more information about Near East Fuel Station, please visit the official website:
<https://yakindoguakaryakit.com/>

Useful Phone Numbers

For more details about telephone contacts at Near East University and to find the phone numbers for specific departments or services, please visit the university's official website:
<https://neu.edu.tr/telefon-rehberi/>

Campus Traffic Rules and Safety

Near East University's campus is subject to specific traffic rules to ensure the **safety and comfort** of students, staff, and visitors. These rules are **monitored 24/7** by NEU personnel, and **penalties may be applied** in case of violations. A full understanding and application of these rules contribute to creating a safer and more orderly campus environment.

Traffic Flow and Right of Way: Traffic on the NEU campus flows in the left lane. Therefore, drivers must keep left and follow the right-of-way rules to ensure smooth traffic movement.

Pedestrian and Bicycle Priority Campus: Please give priority to pedestrians and cyclists in crosswalks and designated bike lanes. Slow down and proceed with caution in these areas to ensure safety.

Speed Limit: The maximum speed limit on campus is 40 km/h. Adhering to this limit significantly reduces the risk of accidents and enhances overall safety.

Horn and Loud Music: Using car horns and playing loud music is prohibited on campus. Following this rule helps maintain a peaceful environment for everyone.

Traffic Signs and Directions: Traffic signs and directional markers are placed throughout the campus to support safe and orderly traffic flow. Please always follow these signs.

Routes and Parking Areas: Use designated driving routes and park only in designated areas in accordance with the campus parking regulations. This ensures safety and avoids traffic disruption.

Monitoring and Security: Traffic rules are regularly monitored by security personnel. Please follow their instructions and do not hesitate to ask for help if needed. Adhering to safety measures ensures a smooth and respectful traffic environment for all. By respecting these rules, we can collectively contribute to a safer and more peaceful campus.

Transportation Services

Near East University provides its staff with comfortable and free transportation options, ensuring easy access to both the campus and surrounding areas. The university's transportation services cover routes that are scheduled according to class and work hours. Free university buses departing from the campus and heading to various regions and the city centre offer a wide transportation network. This service aims to reduce vehicle usage and promote environmentally friendly shared transport. Free transportation services are a significant support in facilitating the daily lives of staff.

Campus–Nicosia and Nicosia–Campus Routes: Shuttle services between the campus and Nicosia operate from 06:45 AM to 10:15 PM. These reciprocal services allow our staff to travel comfortably and safely between the campus and Nicosia. The routes cover a wide area. Detailed information about transportation services and routes is available on the university's website: <https://bus.neu.edu.tr/>

Intercity Free Shuttle Services: Near East University offers free shuttle services for staff commuting from regions such as Kyrenia (Girne), Famagusta (Mağusa), and Güzelyurt. These services are organized to ensure staff can reach the campus comfortably.

In-Campus Shuttles: Within the campus, there is a free shuttle service between the residential area and faculties or other administrative units. These shuttles facilitate quick and easy access across campus.

Walking Distance Accessibility: The Near East University campus is designed to allow safe walking access to most places. Classrooms, the library, the dining hall, and other key facilities are located within short walking distances. The campus design promotes physical activity and minimizes the need for motor vehicles. Additionally, the university provides alternative eco-friendly transport options such as bicycles and electric scooters for staff use.

By offering these transportation options, Near East University enables its staff to easily access campus events and resources. It supports its personnel in maintaining a productive work-life balance through a safe and extensive transportation network across its large campus area.

**Near East University | Faculty AI and Informatics
Management Information Systems Department | Student Information Handbook
2025–2026 Academic Year**

· Who ARE YOU? WHERE ARE YOU?

- Faculty Established Year: 2025
- Department Established: 2013
- Aim: To be an internationally recognized and accredited faculty
- Programs: 9 bachelor, 7 masters', 3 PhD
- Education Language: Turkish and English
- Student Number: +1500

· MANAGEMENT INFORMATION SYSTEMS DEPARTMENT

- Head of Department: Prof. Dr. Fezile Özdamli
- Contact: fezile.ozdamli@neu.edu.tr
- Degree Awarded: Bachelor of MIS
- Total Credit: 240 ECTS
- Elective Courses: At least 12 elective courses

✓ GRADUATION REQUIREMENTS

- To complete all courses with at least a DD/S letter grade

- Cumulative Grade Point Average (CGPA): At least 2.00 / 4.00
- 70% class attendance requirement
- 12 elective courses must be taken

· REGISTRATION & ADMISSION PROCEDURES

1. Pay the tuition fee
2. Register for courses via ogrsis.neu.edu.tr
3. Get advisor approval
4. If necessary, make changes during the “add/drop” week

· CONTACT

- Deanship: 90 (392) 223 64 64 – yapayzekavebilisim.dekanlik@neu.edu.tr

· MORE INFORMATION

- Faculty Web: <https://aif.neu.edu.tr/>
- UZEBİM Platform: <https://uzebim.neu.edu.tr>

· CAMPUS LIFE

- Library: Open 7/24 open, 1 million books, 150 million digital resource
- Dining: 22 restaurant & cafe, vegan/vegetarian menu
- Sport: Olympic pool, yoga, fitness, dietitian support
- Psychological Counselling: Free, appointment-based system

· DO NOT FORGET!

- At Near East University, education is not only academic; it's an integrated journey of social, cultural, and personal development. Let this brochure be your guide as you take your first steps!